



Lone Tree Overpass Virtual Public Meeting

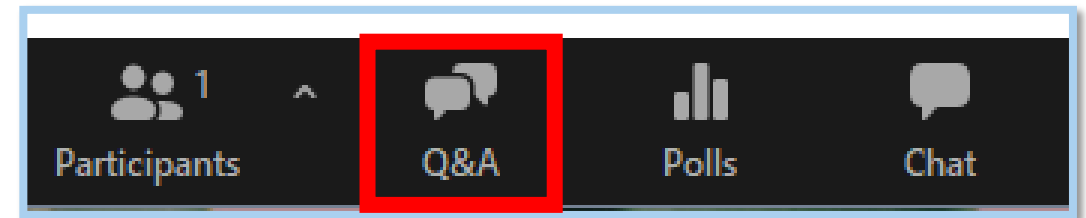
July 27, 2022



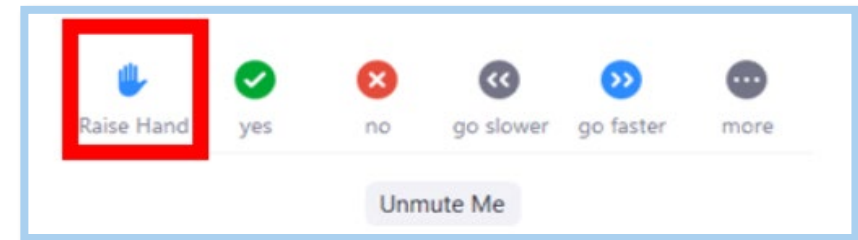


COMMENTS

- Zoom Webinar – only presenters will be on video
- This meeting is being recorded
- Q&A - Please add project-related questions in the dialogue box



- To ask a question, raise your hand



or press *9 if you have dialed in by telephone



CITY OF
FLAGSTAFF

Welcome





AGENDA

- ✧ Overview
- ✧ Intersection Updates
- ✧ Economic Impact Study
- ✧ Public Art and Landscaping
- ✧ Project Schedule
- ✧ Next Steps
- ✧ Q & A



Overview

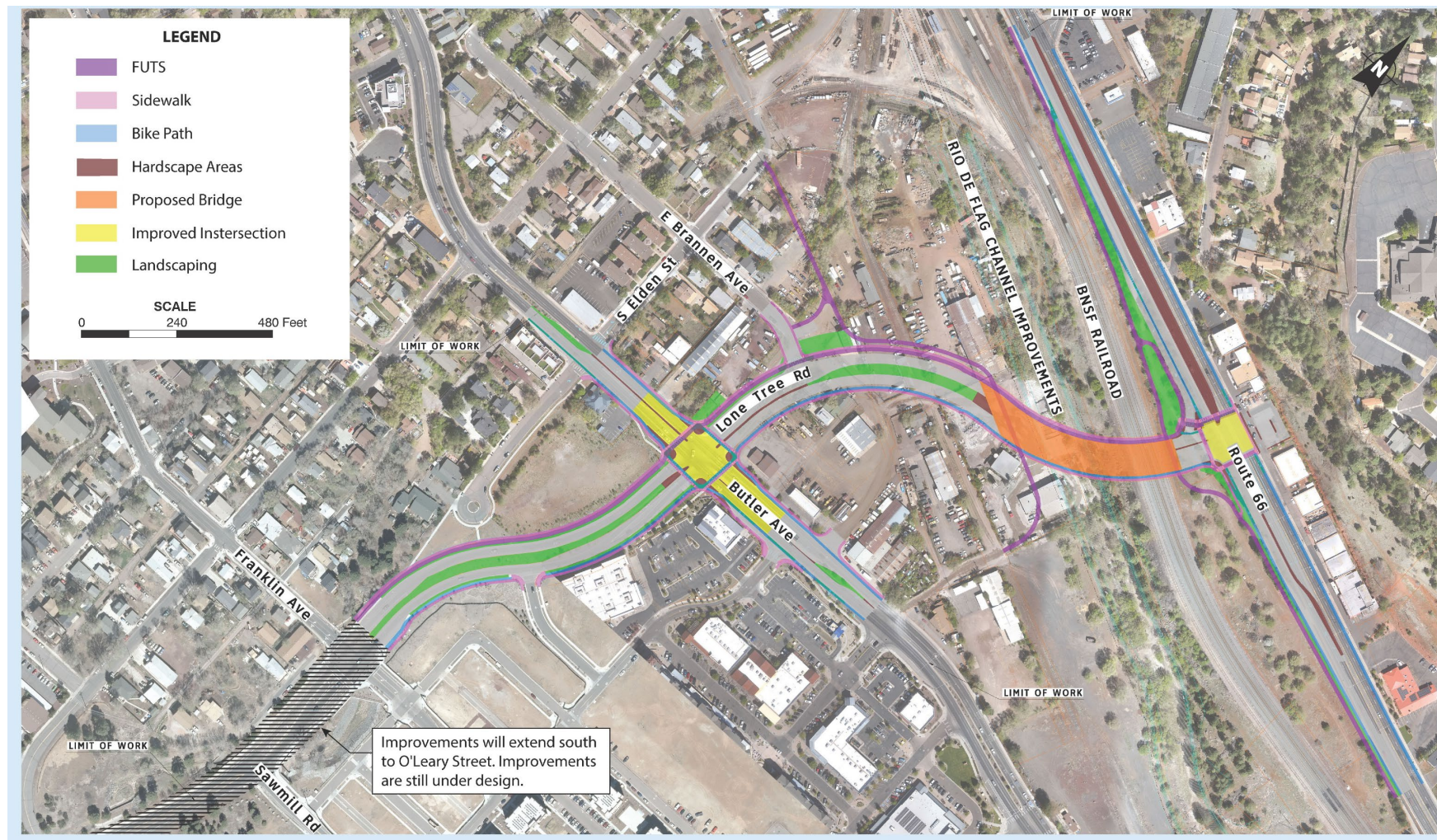
- ✧ Overview
- ✧ Intersection Updates
- ✧ Economic Impact Study
- ✧ Public Art and Landscaping
- ✧ Project Schedule
- ✧ Next Steps
- ✧ Q & A



Project Area Map

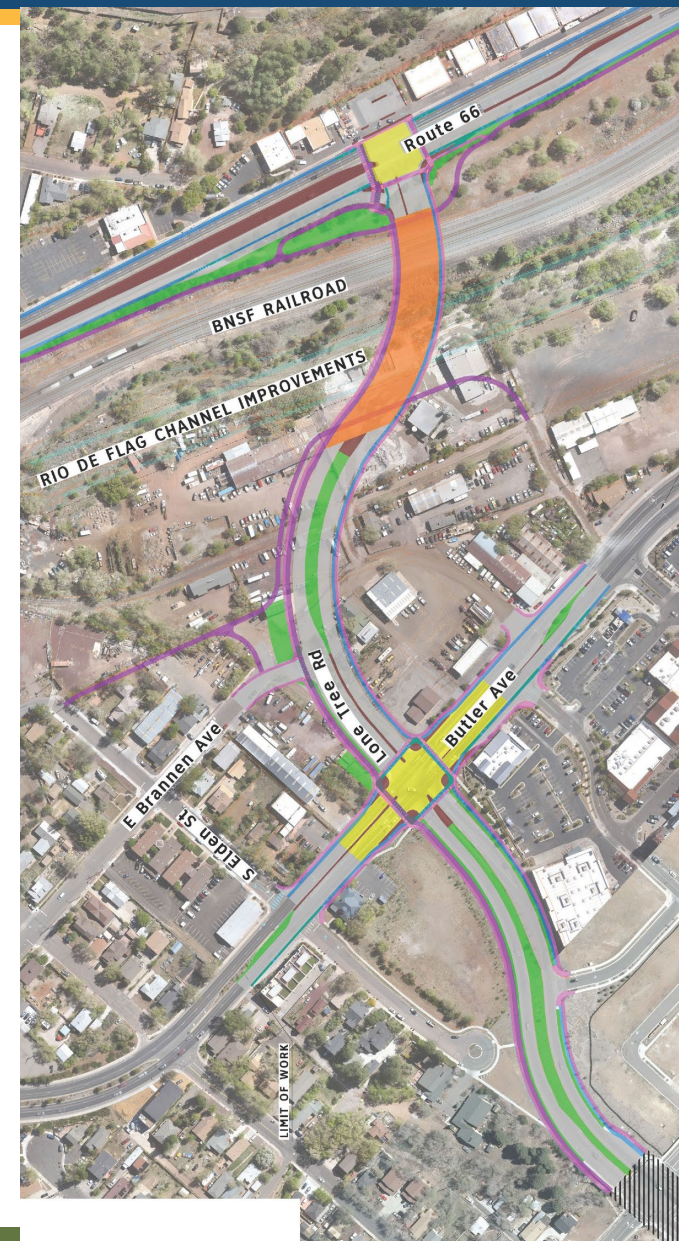


Project Elements



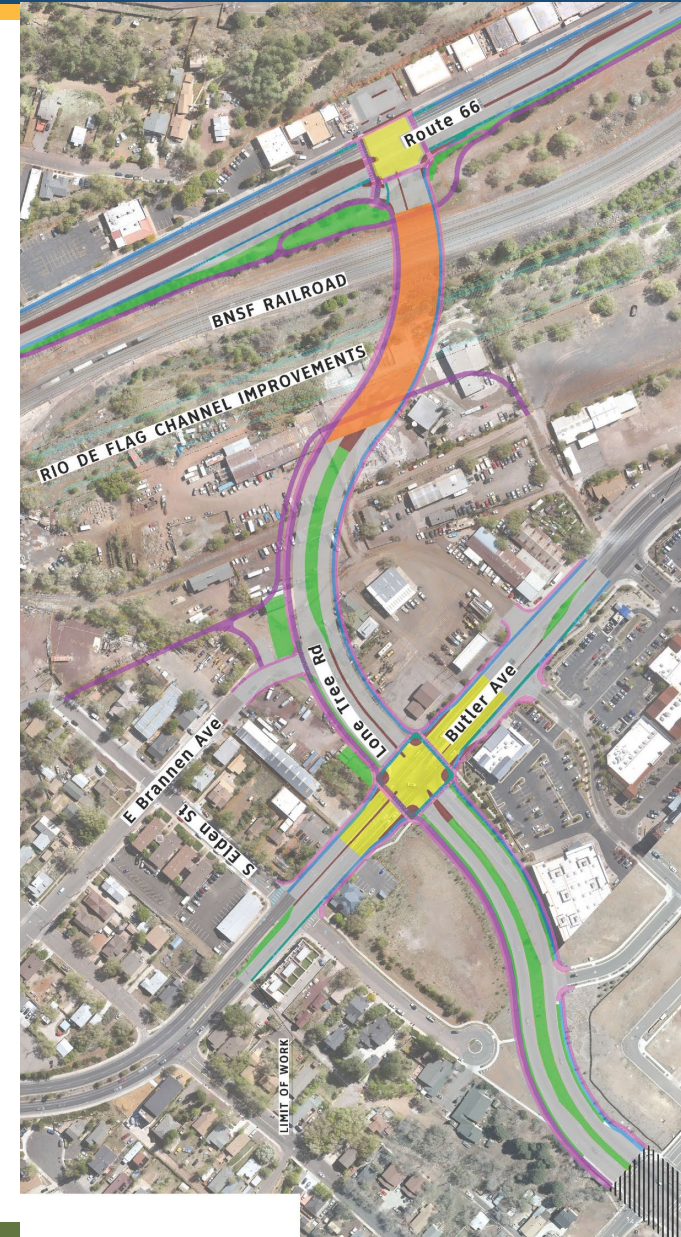
Project Elements - Details

- ✧ 0.6 Miles FUTS Trail Extension
 - ✧ Bidirectional bicycle lanes
- ✧ 0.6 Miles of Bicycle Track
- ✧ Bicycle lanes, FUTS, and sidewalks are off-road
- ✧ New grade separated FUTS connections north end of project
- ✧ Grade separated bicycle and pedestrian trail south end of project



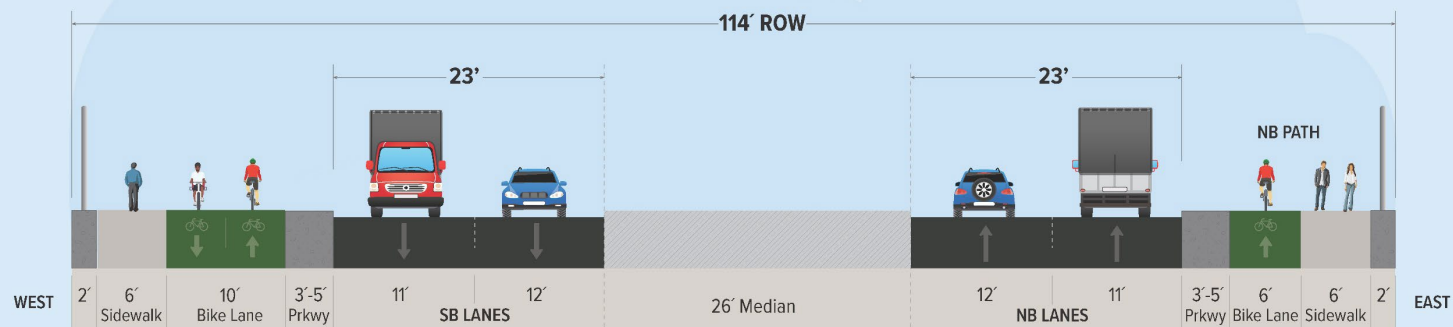
Project Elements - Details

- ✧ 0.3 Miles of new four-lane roadway between Butler Avenue and Route 66
- ✧ Grade separated with BNSF Railway and Rio de Flag Flood Control Project
- ✧ 0.3 Miles of roadway widening from two-lane to four-lane between Butler Avenue and Sawmill Road
- ✧ Protected Intersections at Route 66 and Butler Avenue
- ✧ Rebuilt intersections at Franklin Avenue and Sawmill Road

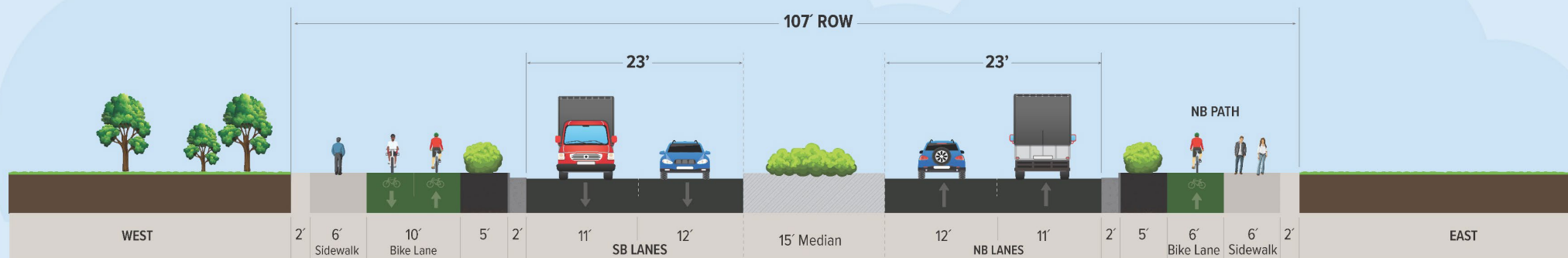


Lone Tree Road

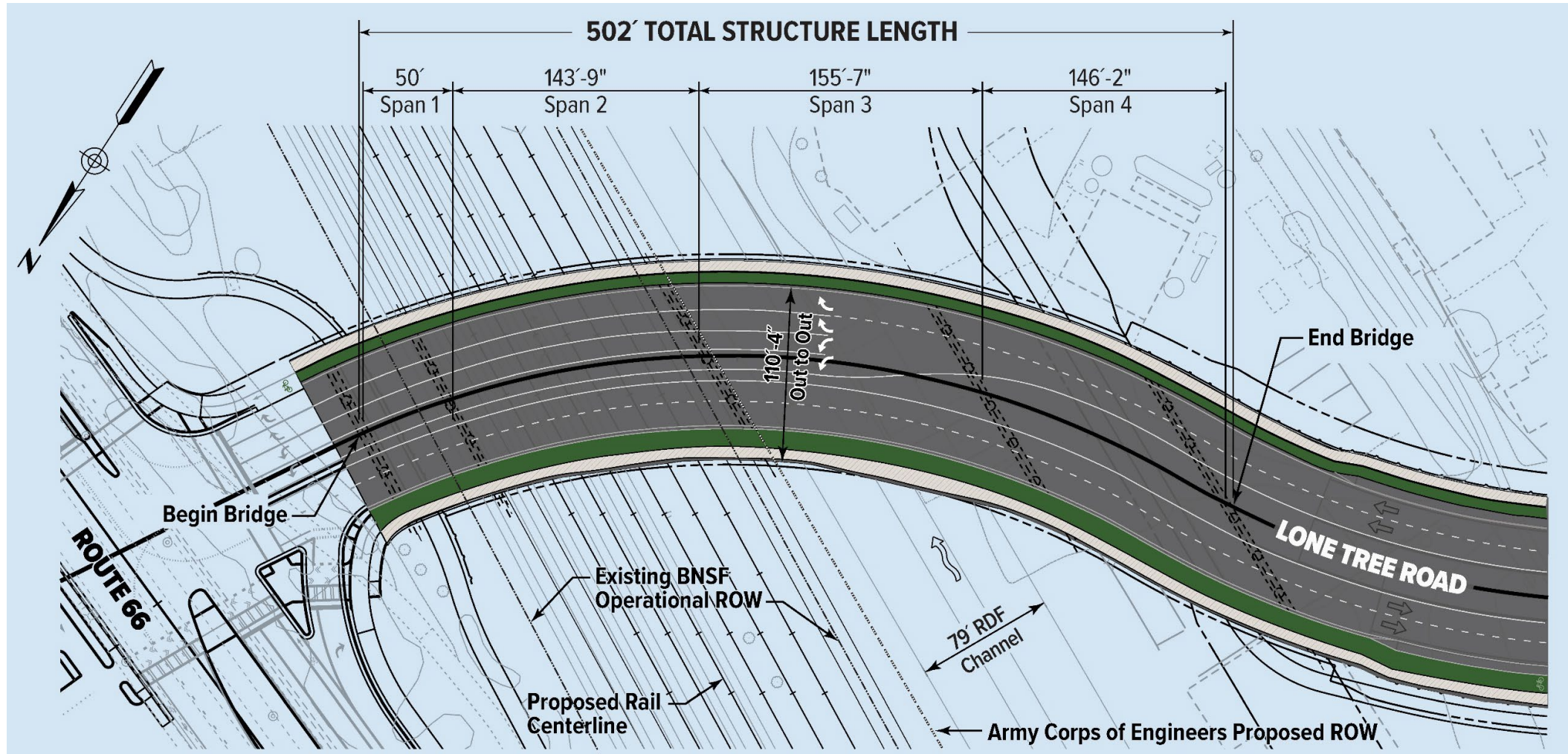
ELEVATED TYPICAL SECTION (ON BRIDGE AND WALLS)



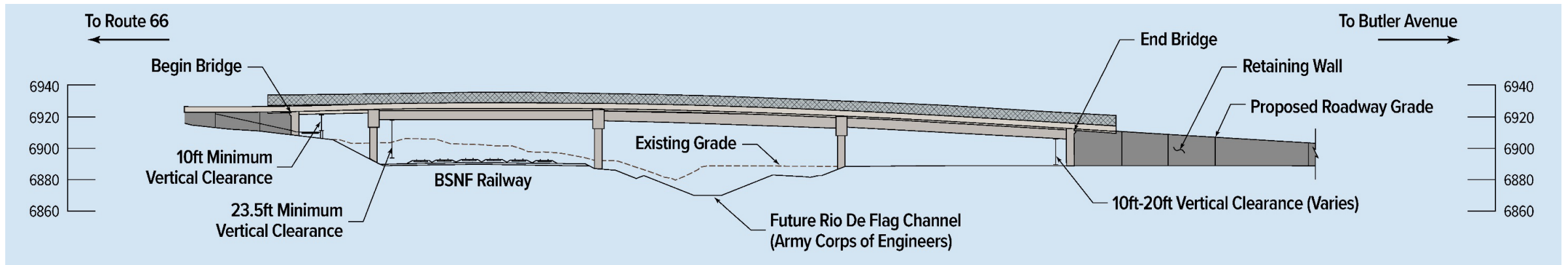
ROADWAY TYPICAL SECTION



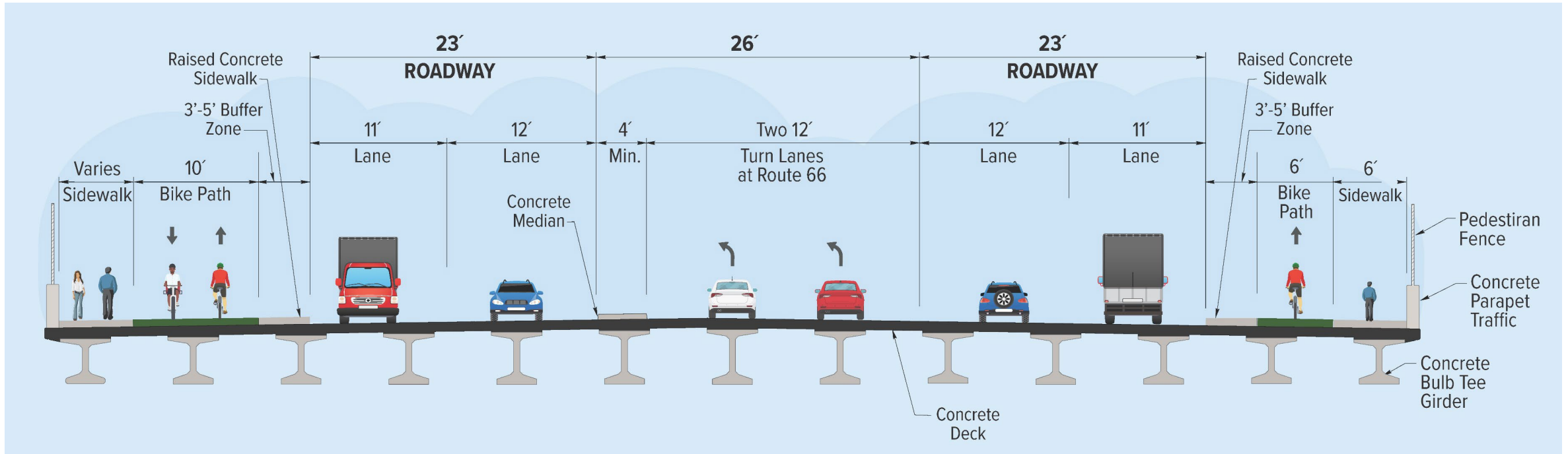
Lone Tree Overpass – Plan View



Lone Tree Overpass - Elevation



Lone Tree Overpass – Cross Section





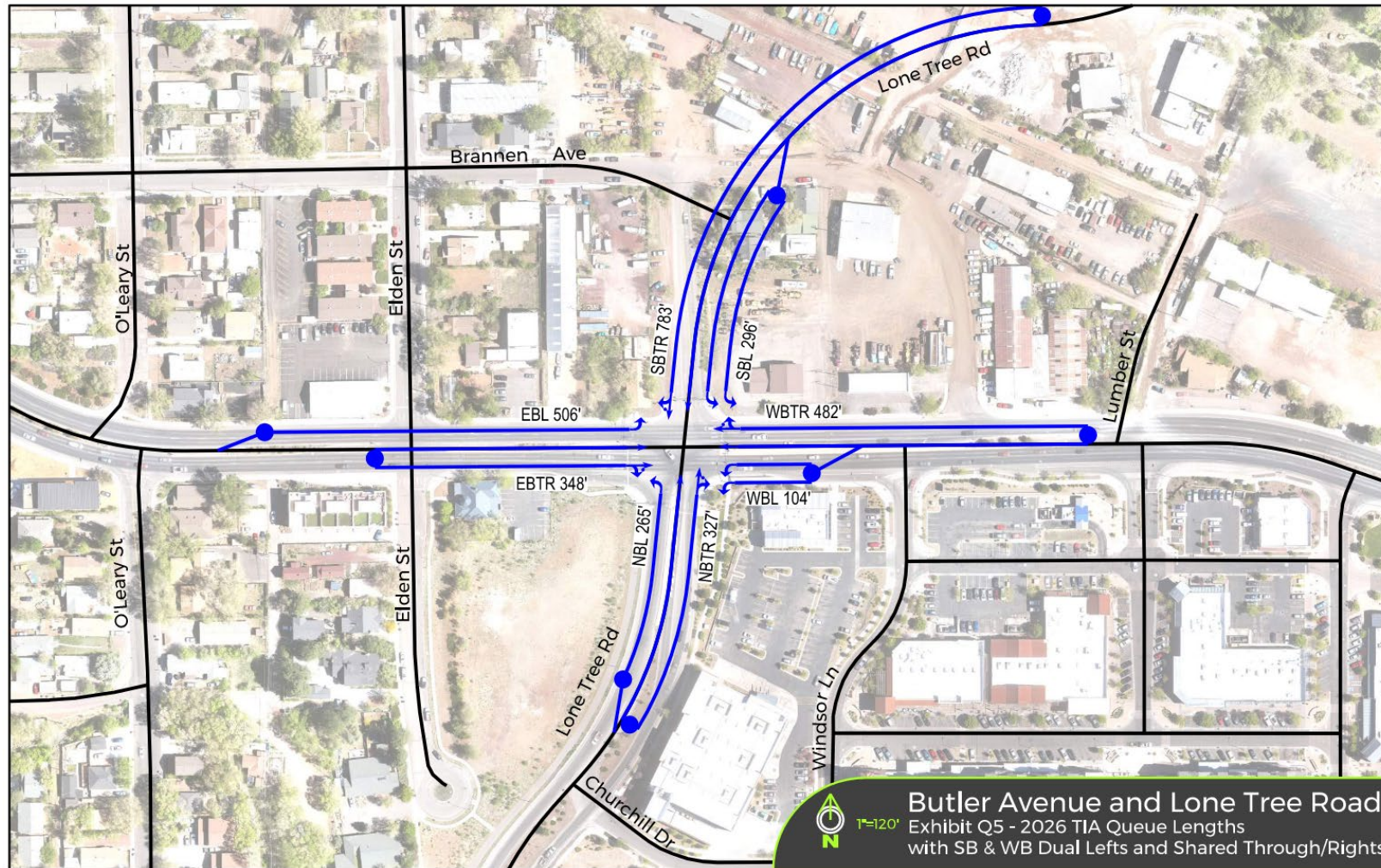
Intersections

- ✧ Overview
- ✧ Intersection Updates
- ✧ Economic Impact Study
- ✧ Public Art and Landscaping
- ✧ Project Schedule
- ✧ Next Steps
- ✧ Q & A

Lone Tree Road and Butler Avenue Intersection



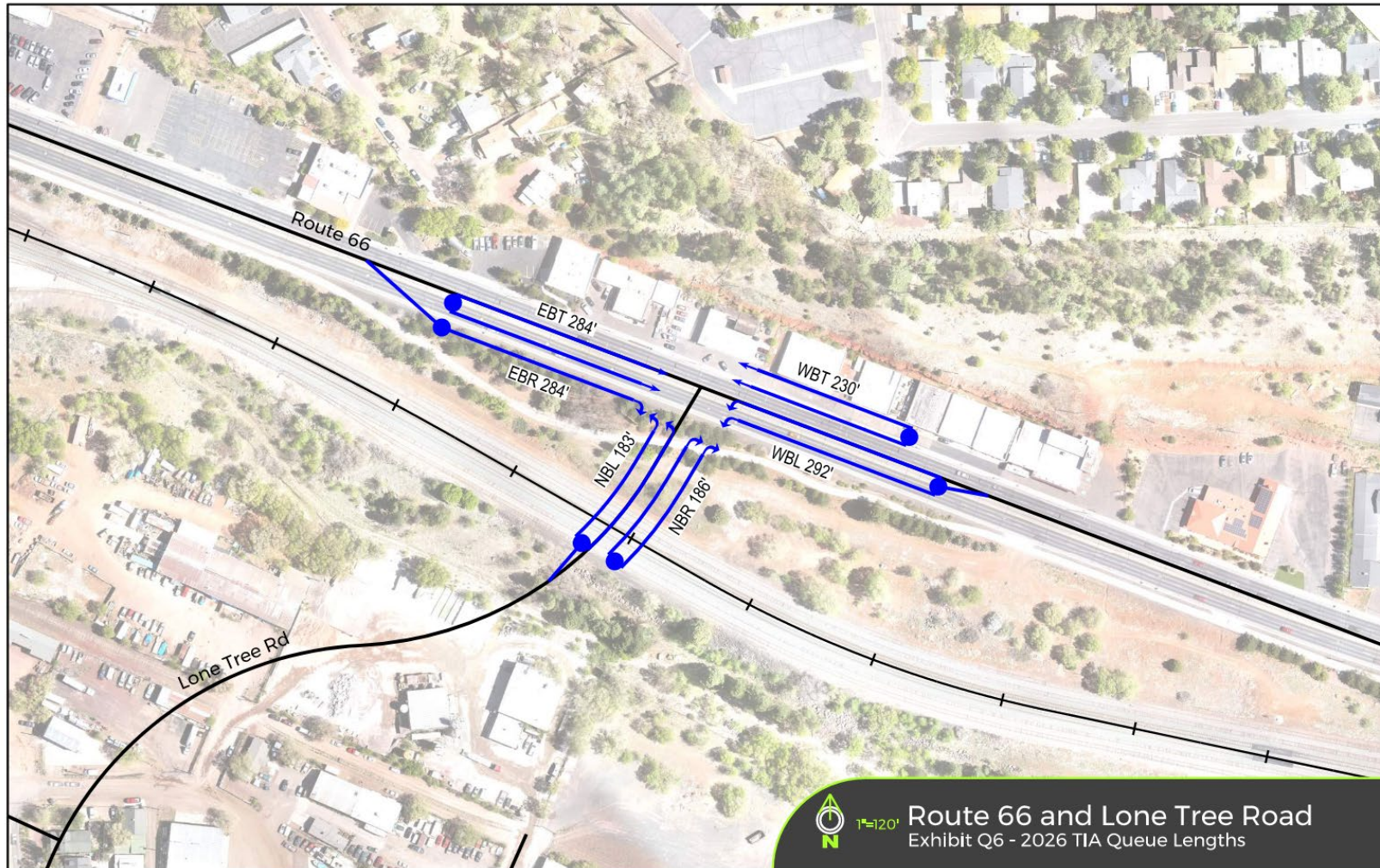
Lone Tree Road and Butler Avenue Intersection



Lone Tree Road and Route 66 Intersection

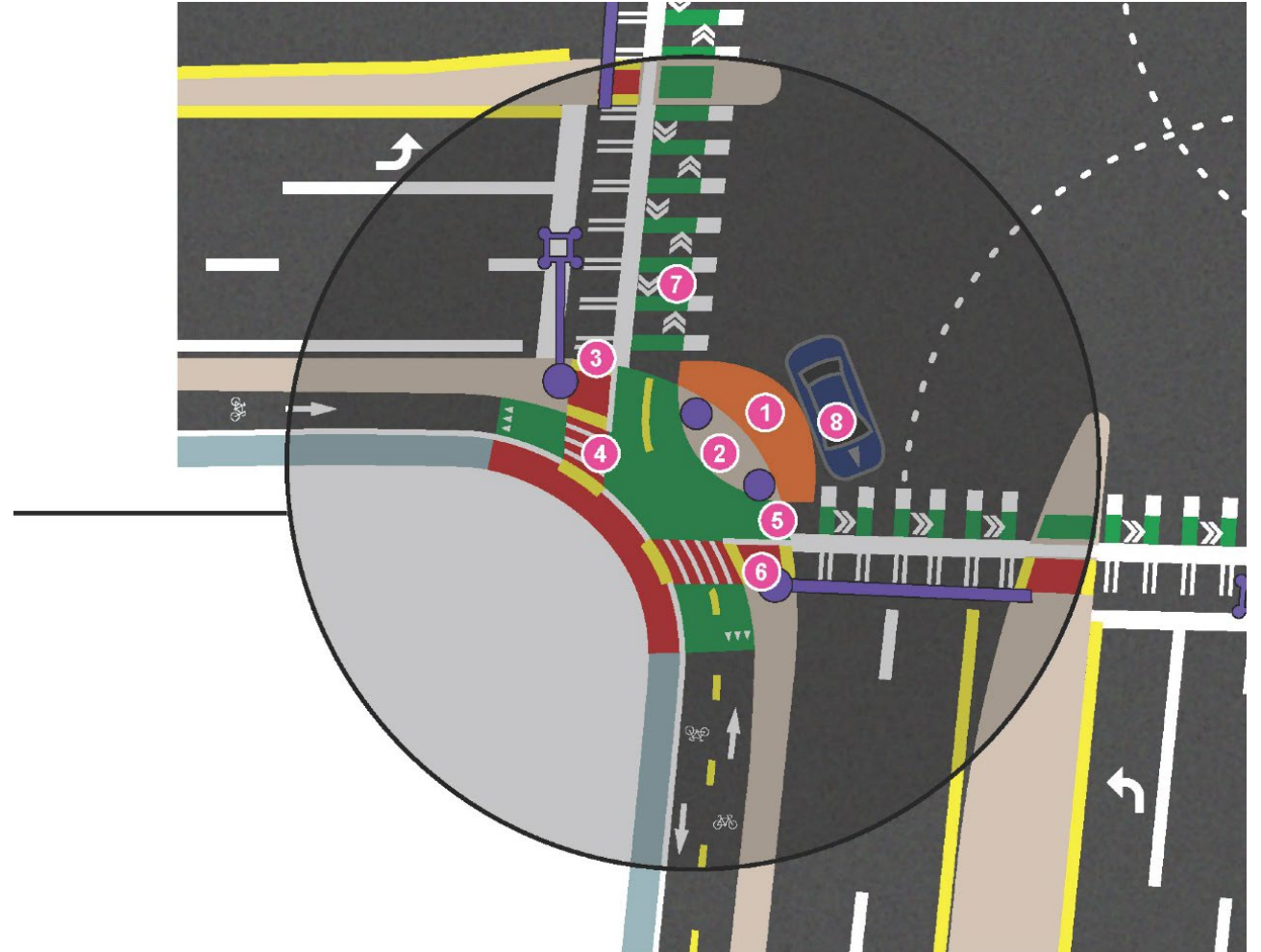


Lone Tree Road and Route 66 Intersection



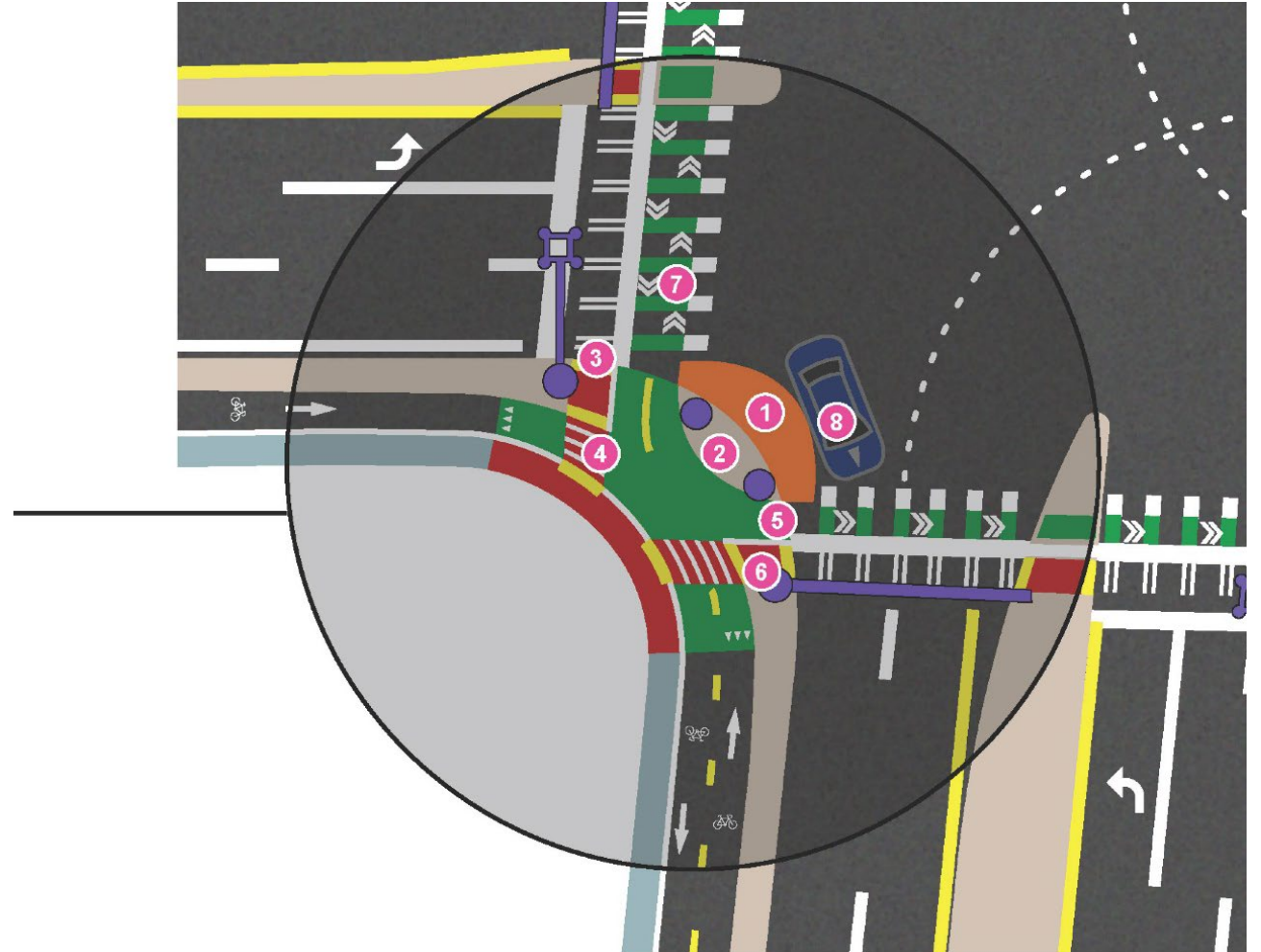
Protected Intersections

1. Corner Wedges and Speed Bumps
2. Corner Island
3. Pedestrian Waiting Areas
4. Warning Markings
5. Bicycle Waiting Area



Protected Intersections

- 6. Bike Signals
- 7. Directional Guidance
- 8. Motorist Waiting Zones

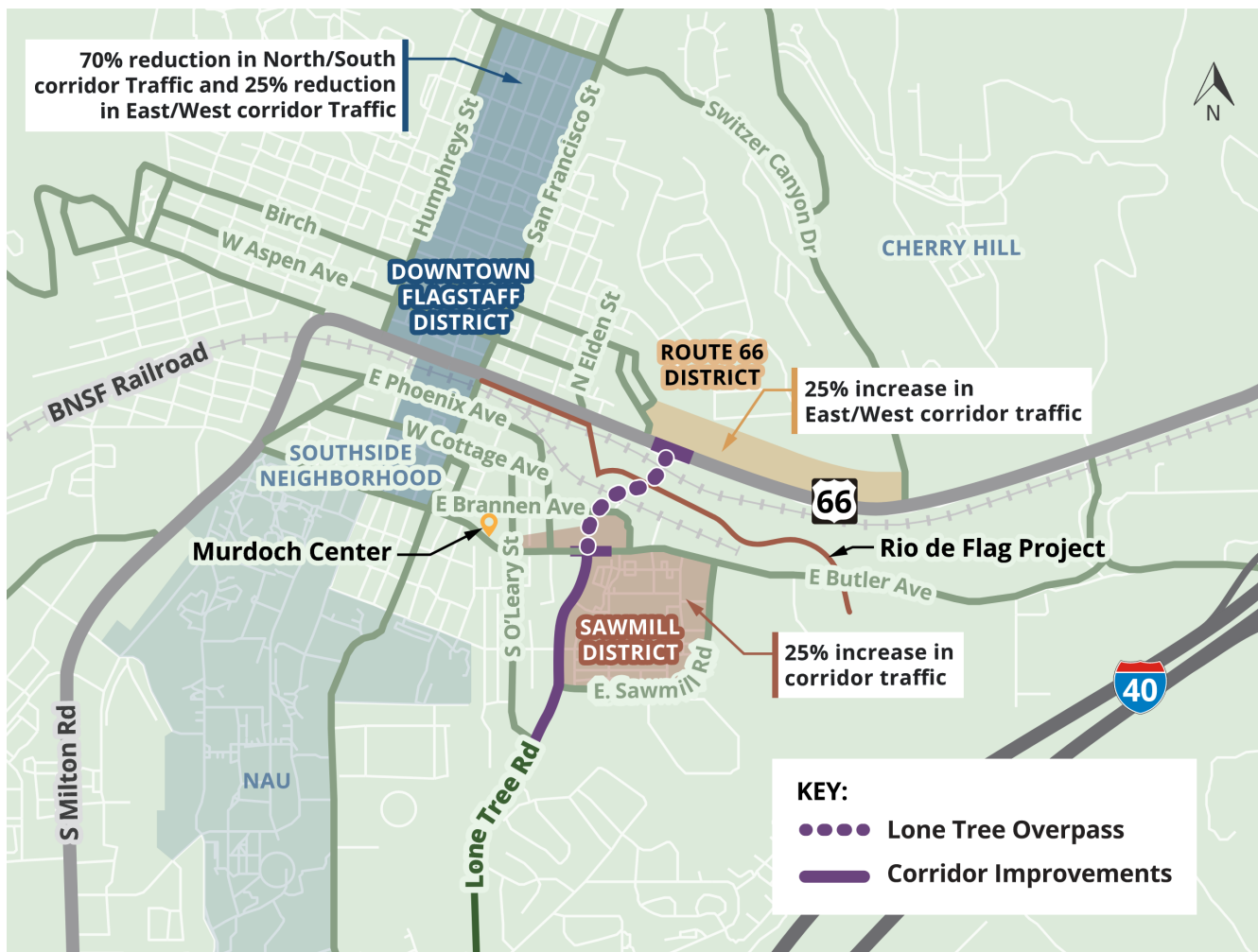




Economics

- ✧ Overview
- ✧ Intersection Updates
- ✧ **Economic Impact Study**
- ✧ Public Art and Landscaping
- ✧ Project Schedule
- ✧ Next Steps
- ✧ Q & A

Economic Impact Study



Economic Trends



In Pass-Through Traffic Spending in Southside District



In Pass-Through Traffic Spending in Sawmill and Route 66 Districts



Small Decrease in Spending Due to Pass-Through Traffic Overall in Project Area

Mitigation Opportunities



Increase Opportunity/Destination Business



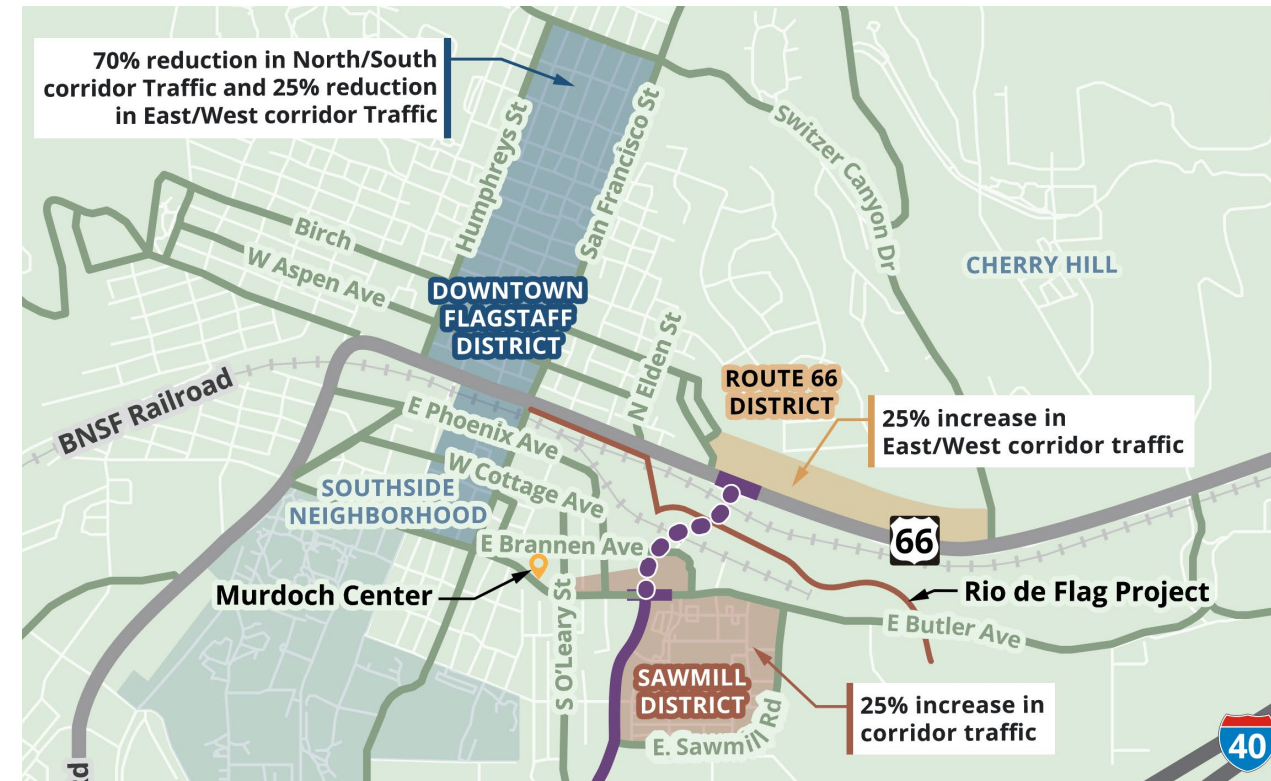
Improve Walkability and Cycling in Impacted Areas



We Want Your Ideas!

Economic Impact Study – Business Survey

- ✧ 20 Respondents
- ✧ 16 of 20 were aware of project
- ✧ Mixed responses on project benefiting or disadvantaging businesses
- ✧ Primary concerns were around access, parking, and travel times





Public Art

- ✧ Overview
- ✧ Intersection Updates
- ✧ Economic Impact Study
- ✧ **Public Art and Landscaping**
- ✧ Project Schedule
- ✧ Next Steps
- ✧ Q & A

Public Art



Public Art

OVERPASS Integrated Art Opportunities:

Overpass Fencing

Safety Railings

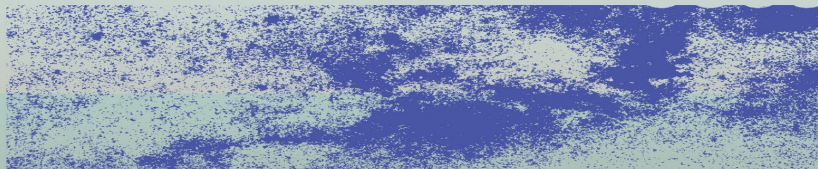
Dark Sky Lighting

Concrete Textures

Paving

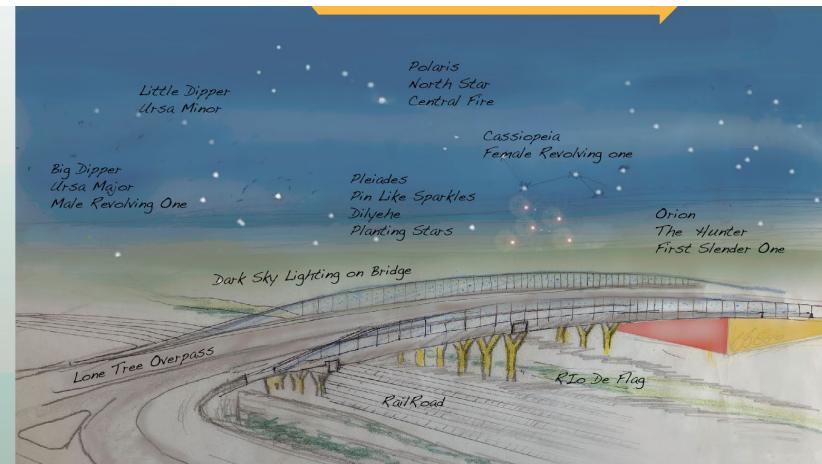
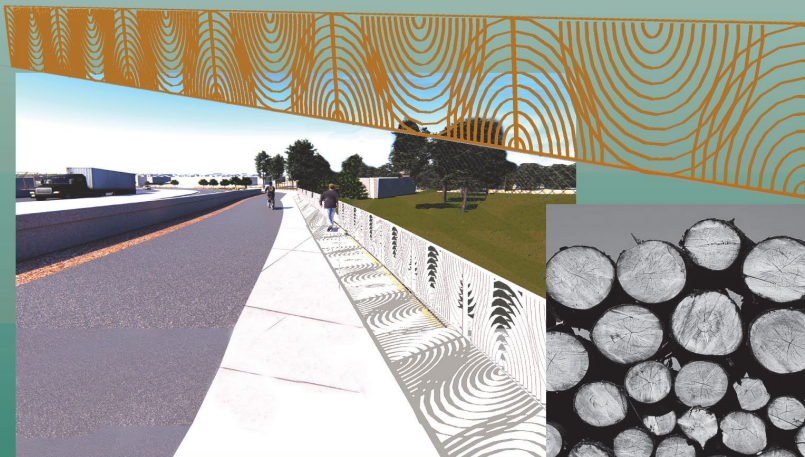


Lowell Observatory-1896
Expanding Universe detected at Lowell -1912
Pluto discovered 1930
Flagstaff enacts the worlds first Lighting ordinance-1958
Lunar Mapping - 1961
Pluto's atmosphere -1988
Internaional Dark Sky City-2001

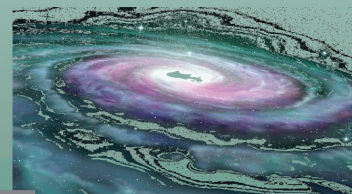


Yikaisdaha - Awaits the Day- Milky Way

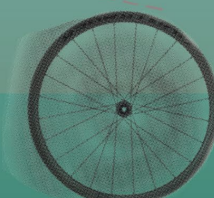
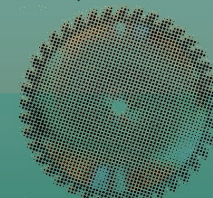
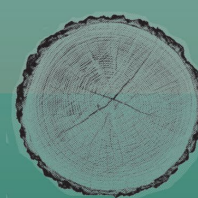
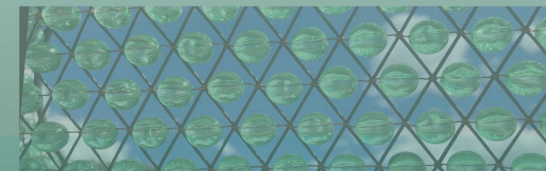
Tree Ring Railing



Indigenous Astronomy predates the Lowell Observatory
Overpass will provide distant views day and night



Astronomy



Integrated art can reinforce connections between the past and present

Public Art

The Southside Legacy of Achievement

The Southside legacy of achievement traces back to the inspired leadership of many gifted educators, entrepreneurs and political leaders. Notably: Cleo Wilson Murdoch, her accomplished student, Wilson C. Riles, and civil rights activist Ms Shirley Simms.

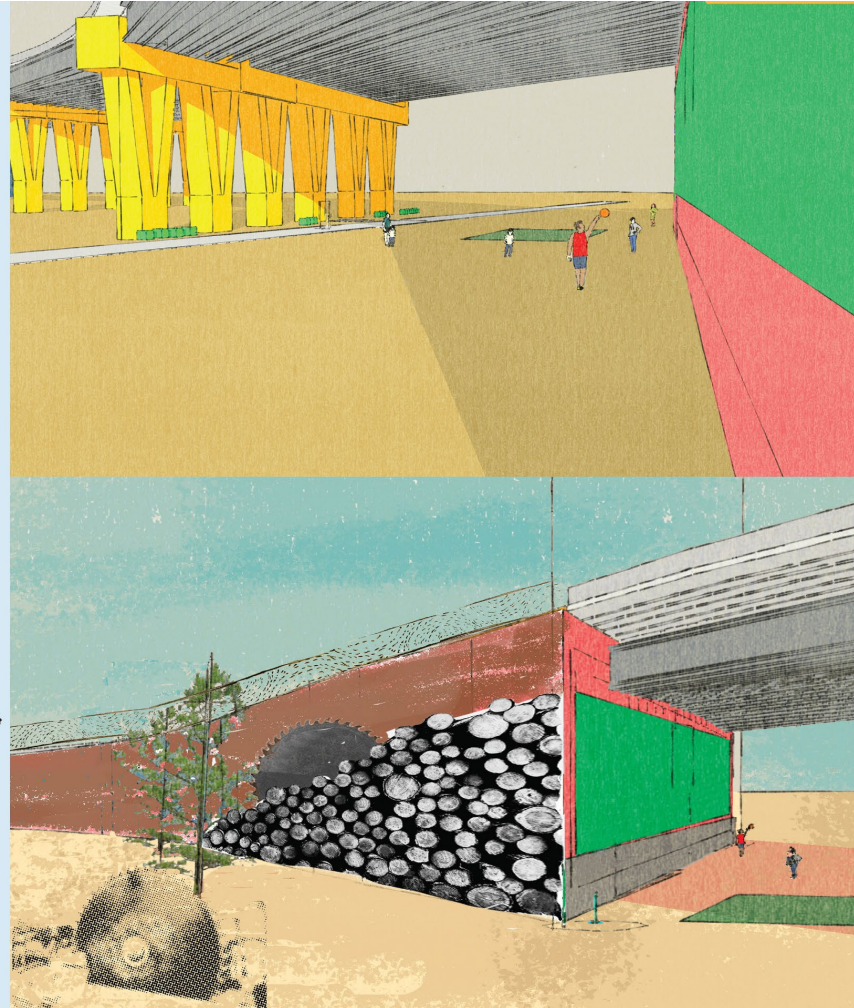
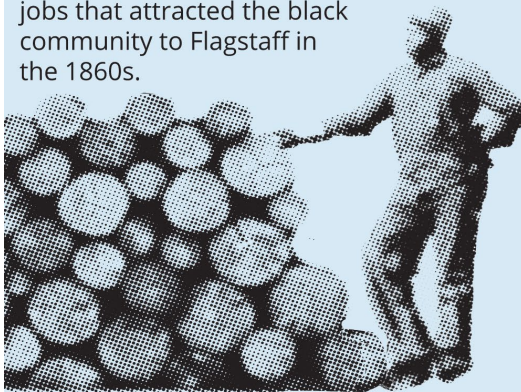


Cleo Wilson Murdoch

Wilson C. Riles

Ms. Shirley Simms

Sawmills provided the first jobs that attracted the black community to Flagstaff in the 1860s.

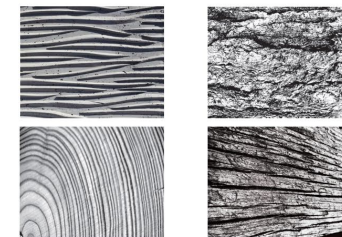


Community Activated Space

Large open areas under the bridge can be developed in the future by the community for events and active play.

The Overpass project will provide the first passes of design including multi-use paths, lights, color and decorative textures on the bridge.

Southside Integrated Art Opportunities Include:



- ✓ Bridge Piers
- ✓ Textures
- ✓ Lighting
- ✓ Paving
- ✓ Colors

Landscaping

Project Goals

- 1) Incorporate City of Flagstaff's Low Impact Development (LID)* design guidelines
- 2) Design comfortable, shaded streets and trails for pedestrians and cyclists
- 3) Include a context sensitive and diverse plant palette to enhance local identity

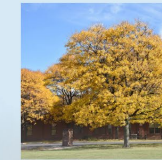
Benefits of LID*

- Enhances the local environment and improves public health
- Protects surface and groundwater and reduces habitat degradation
- Reduces impervious surfaces and decreases infrastructure costs



Plant Material

Proposed street trees and plants are from the City of Flagstaff's recommended and researched list of native or naturalized plants that are appropriate in urban settings.



Honey Locust



Amur Maple



Western Redbud



New Mexico Locust



Gambel Oak



Autumn Blaze Maple



Golden Currant



Perennial Flax



Cliff Rose



Banana Yucca



Oregon Grape



Catmint

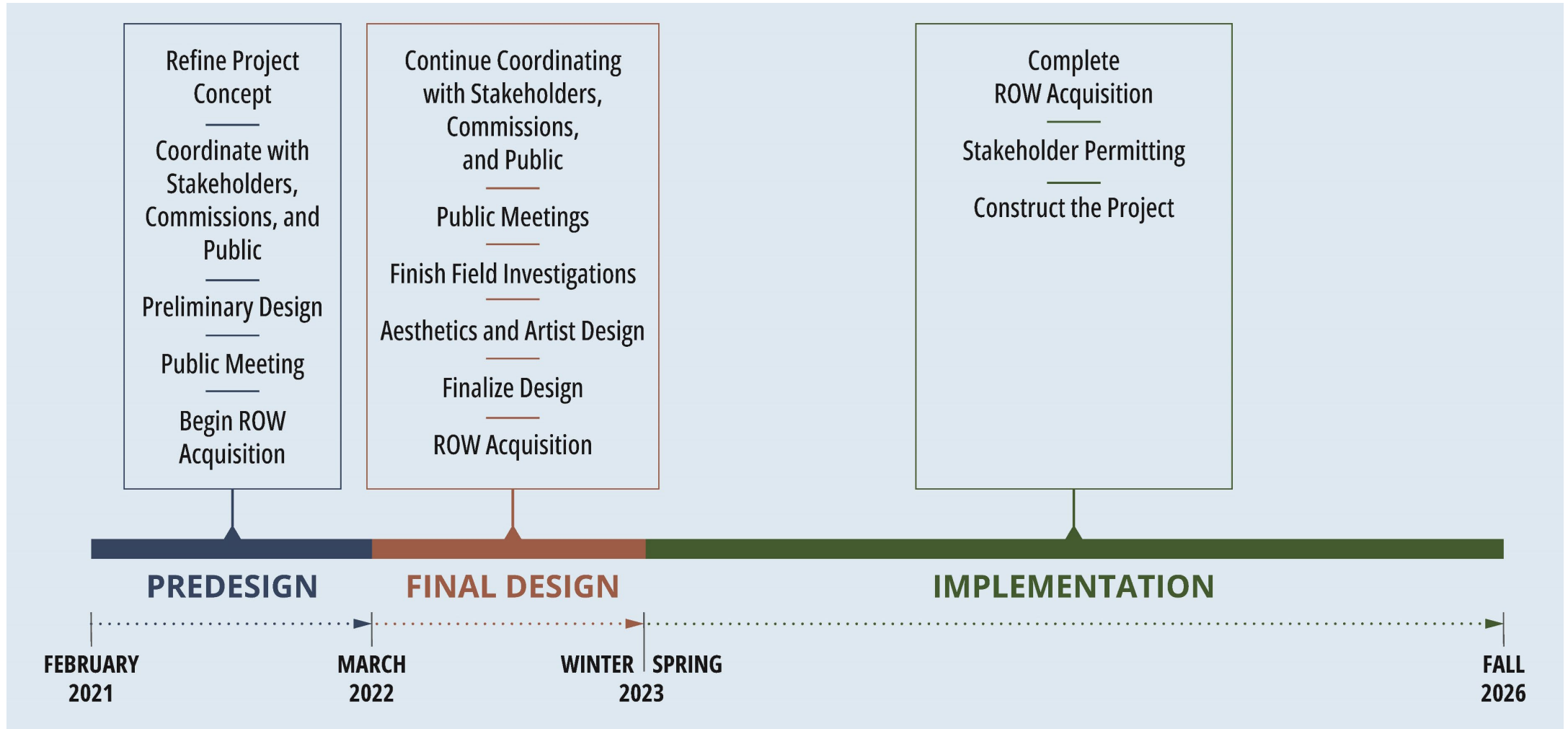
For more information visit: lonetreeoverpass.org



Schedule

- ✧ Overview
- ✧ Intersection Updates
- ✧ Economic Impact Study
- ✧ Public Art and Landscaping
- ✧ **Project Schedule**
- ✧ Next Steps
- ✧ Q & A

Timeline



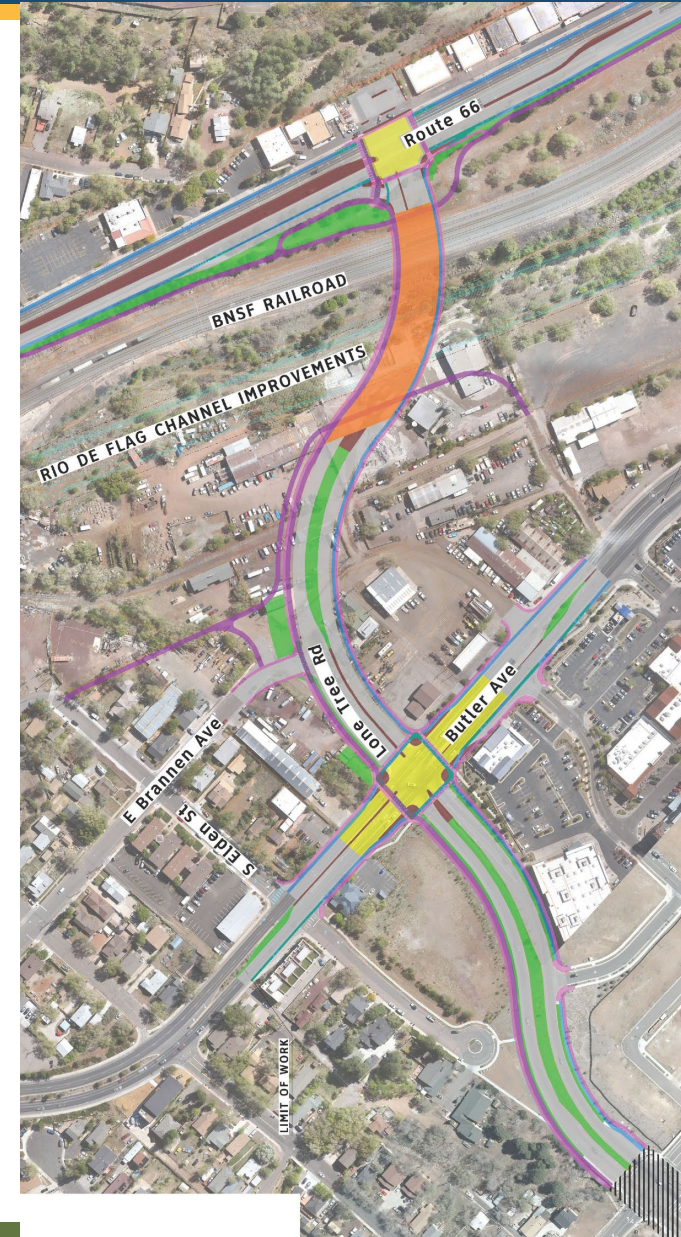


Next Steps

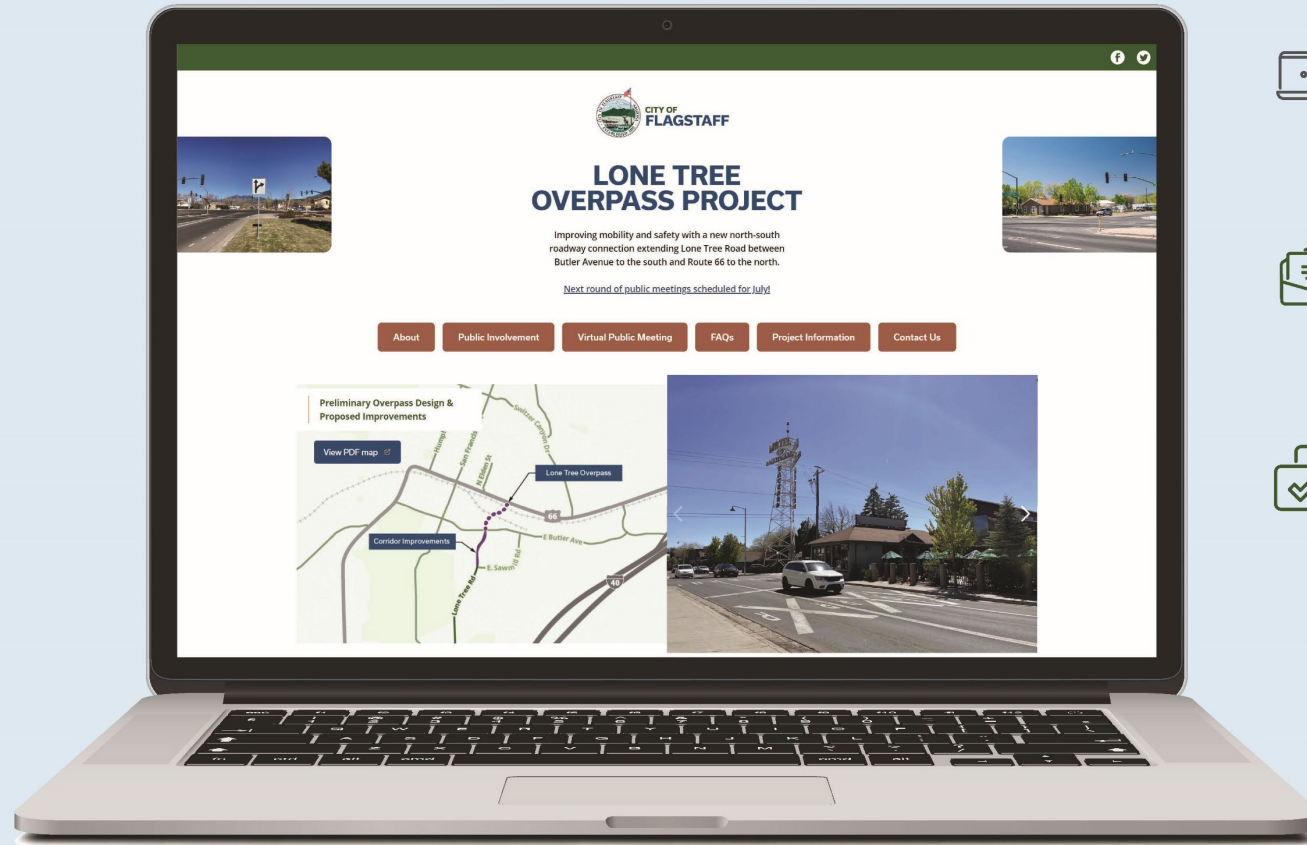
- ✧ Overview
- ✧ Intersection Updates
- ✧ Economic Impact Study
- ✧ Public Art and Landscaping
- ✧ Project Schedule
- ✧ **Next Steps**
- ✧ Q & A

Next Steps

- ✧ Project Team is continuing final design
- ✧ Stakeholder coordination is ongoing
- ✧ Right-of-Way Acquisition is continuing
- ✧ Art concepts will continue to be developed
- ✧ Next Public Meetings is anticipated towards the end of the year with more project updates



Public Involvement



Project Website:
lonetreeoverpass.org



Project Email:
info@lonetreeoverpass.org



Project Contact:
Christine Cameron
Project Manager
ccameron@flagstaff.gov
928-213-2682

For more information visit: lonetreeoverpass.org



Next Steps

- ✧ Overview
- ✧ Intersection Updates
- ✧ Economic Impact Study
- ✧ Public Art and Landscaping
- ✧ Project Schedule
- ✧ Next Steps
- ✧ Q & A