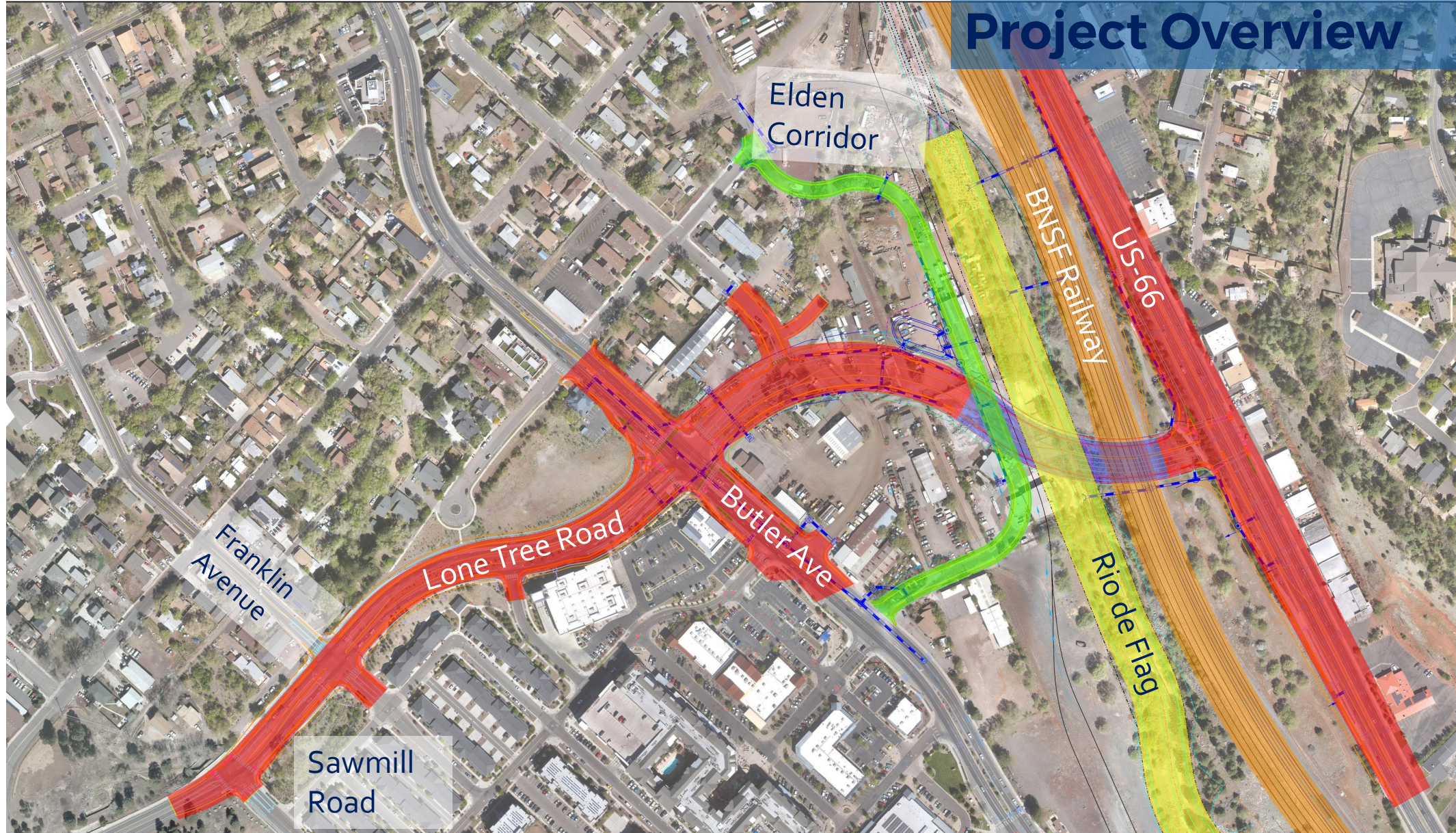
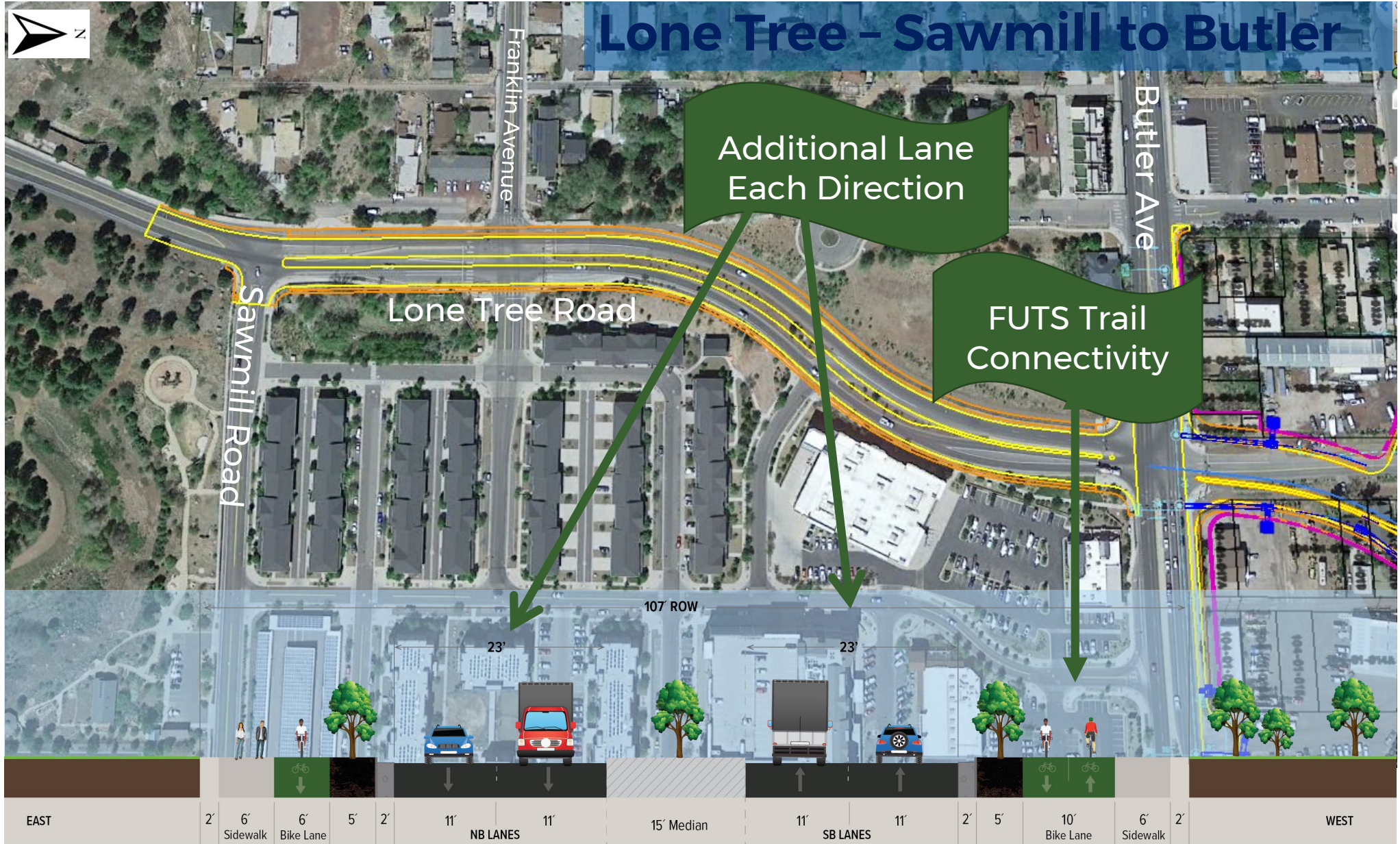




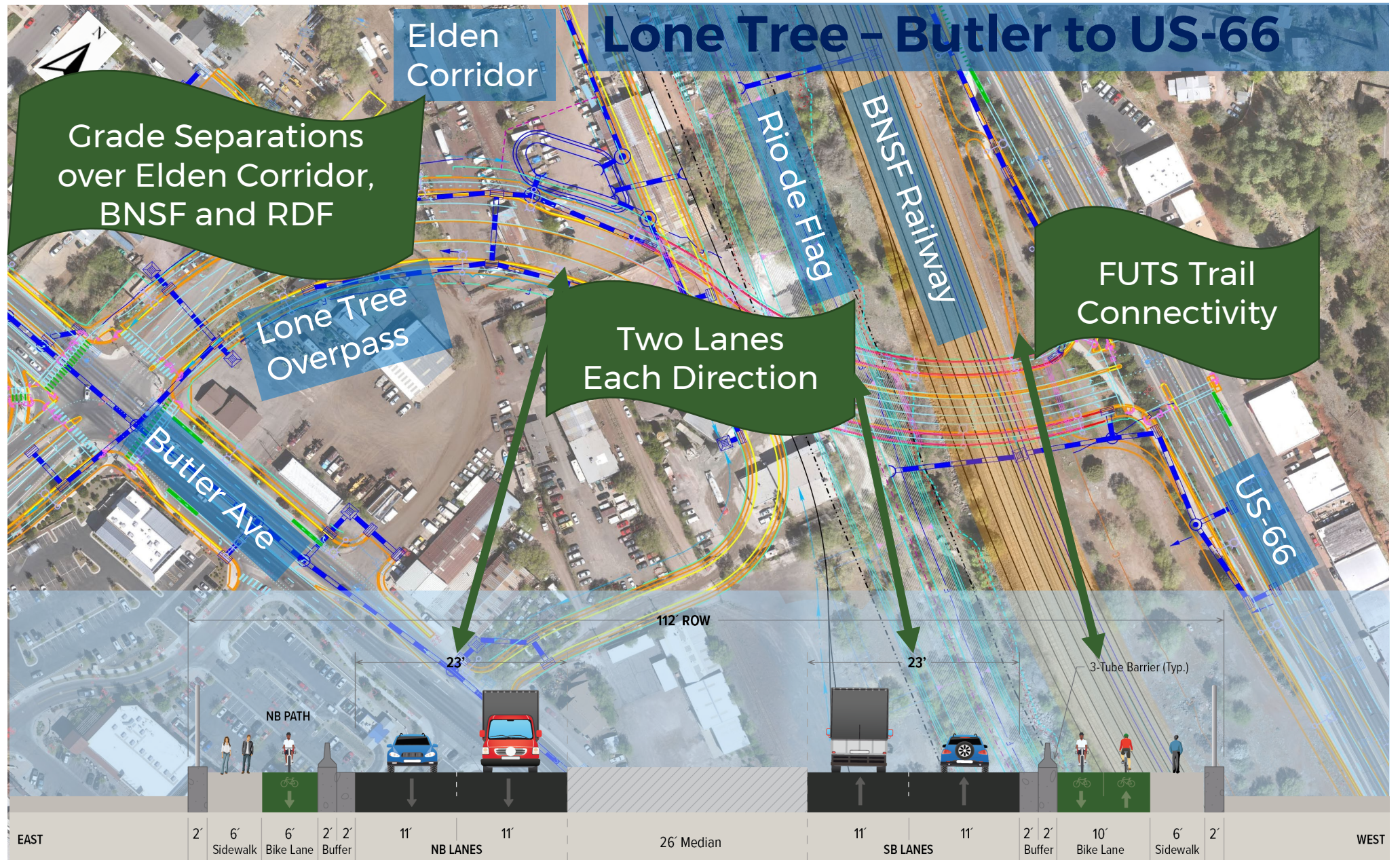
# Project Overview



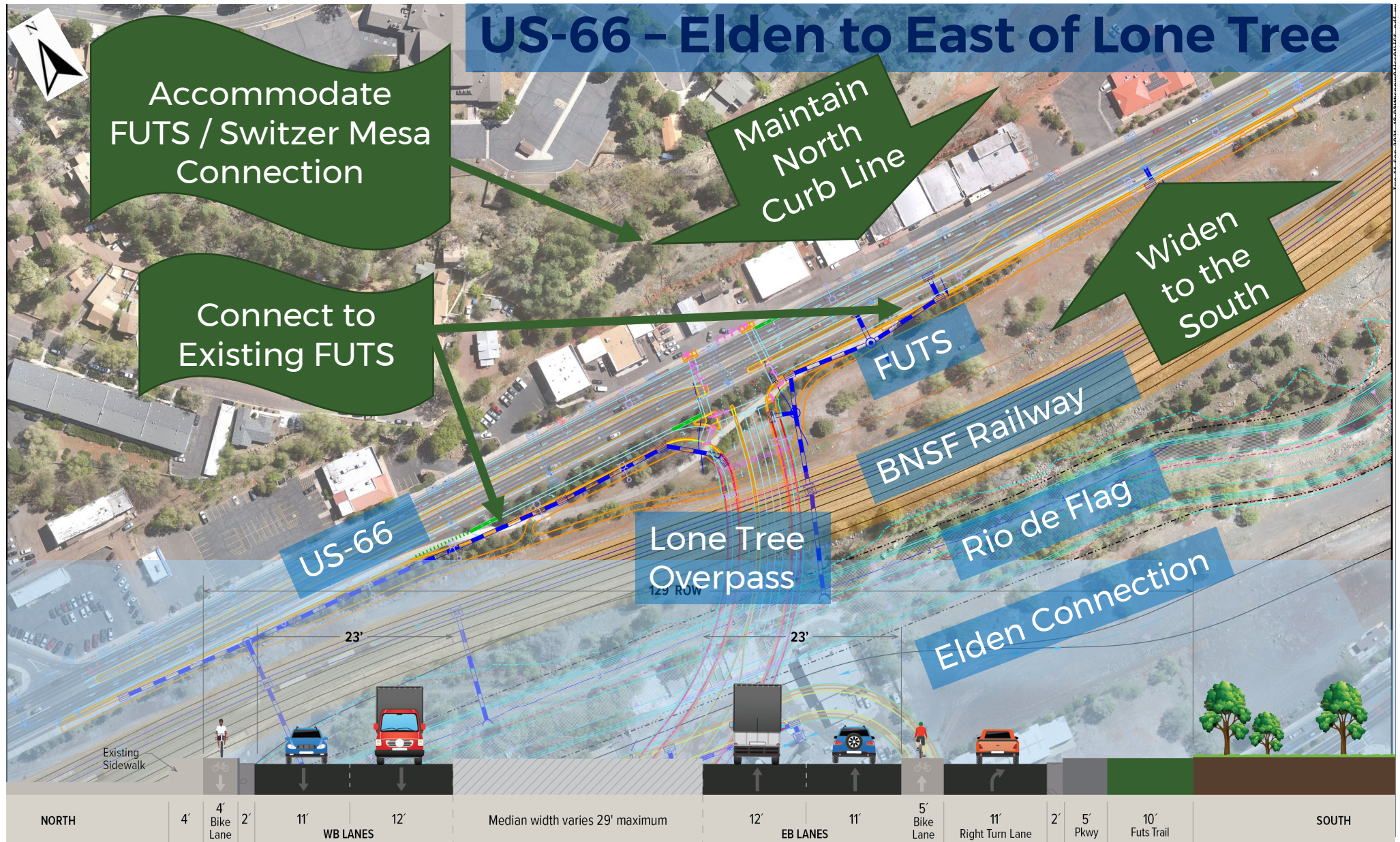














# Project Timeline

The City of Flagstaff's Regional Land Use and Transportation Plan revealed the need for an additional north-south connection into downtown.

**2001**



**2006**

Lone Tree Corridor Study completed developing conceptual plans for the corridor.

**2010**



**2018**

Flagstaff residents approve Propositions 419 and 420 to fund the Lone Tree Overpass and Lone Tree Corridor improvements.



**2020**



**2021-2022**

Design



**2022-2026**



Construction

Lone Tree Overpass Study developed project alternatives and recommended a proposed alignment.

Lone Tree Overpass Study Final Report Update updated recommendations and cost from the 2010 Lone Tree Overpass Study.

*\*We are Here*





# Benefits

- ✧ Create a new north-south connection near downtown Flagstaff
- ✧ Reduce congestion on Milton Road, San Francisco Street, and Beaver Street
- ✧ Improve mobility to neighborhoods and businesses in the area
- ✧ Increase safety by reducing vehicle crossing movements at railroad crossings at San Francisco Street and Beaver Street
- ✧ Enhance regional mobility
- ✧ Improve pedestrian and bicycle safety, mobility and connections
- ✧ Include aesthetic and landscape project improvements



# Funding

- ✧ **Revenues from Proposition 420 will fund the design and construction of the Lone Tree Overpass.**
- ✧ **Revenues from Proposition 419 will fund the design and construction of the Lone Tree Corridor portion of the project from Butler Avenue, south to Sawmill Road.**