



# Lone Tree Overpass Public Meeting

*April 4, 2024*



# AGENDA

- ✧ Welcome and Overview
- ✧ Project Design
- ✧ Construction Phasing
- ✧ How to Stay Up-to-Date
- ✧ Q & A





# AGENDA

- ✧ Welcome and Overview
- ✧ Project Design
- ✧ Construction Phasing
- ✧ How to Stay Up-to-Date
- ✧ Q & A

# Project Overview

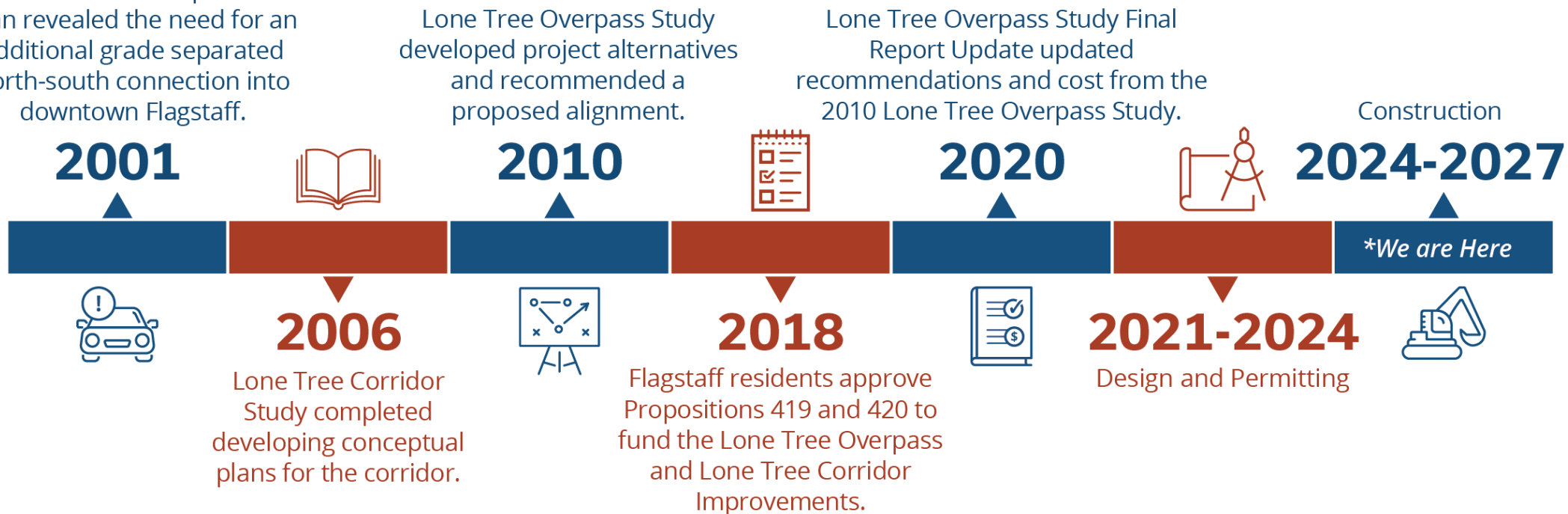
- ✦ Phase One – Lone Tree Corridor Improvements
  - » 2024 - 2026
  - » Roadway and intersection improvements
  - » Lone Tree Road: O’Leary Street to Brannen Avenue
  - » Butler Avenue: Elden Street to Lumber Street
  
- ✦ Phase Two – Lone Tree Overpass
  - » 2025 - 2027
  - » Grade-separated bridge
  - » Lone Tree Road from Brannen Avenue to Route 66





# Project Timeline

The City of Flagstaff's Regional Land Use and Transportation Plan revealed the need for an additional grade separated north-south connection into downtown Flagstaff.



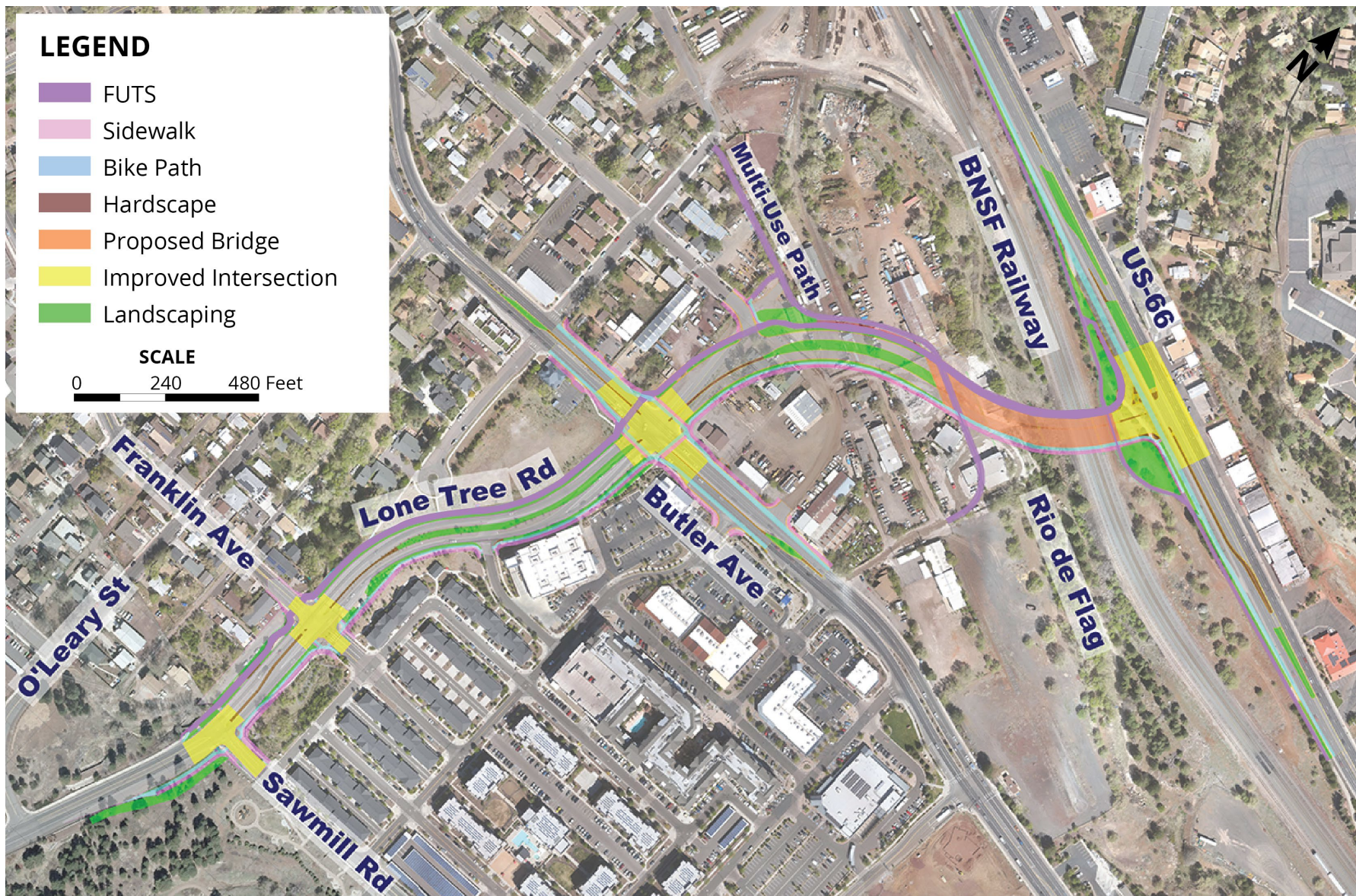


# DESIGN

- ✧ Welcome and Overview
- ✧ **Project Design**
- ✧ Construction Phasing
- ✧ How to Stay Up-to-Date
- ✧ Q & A



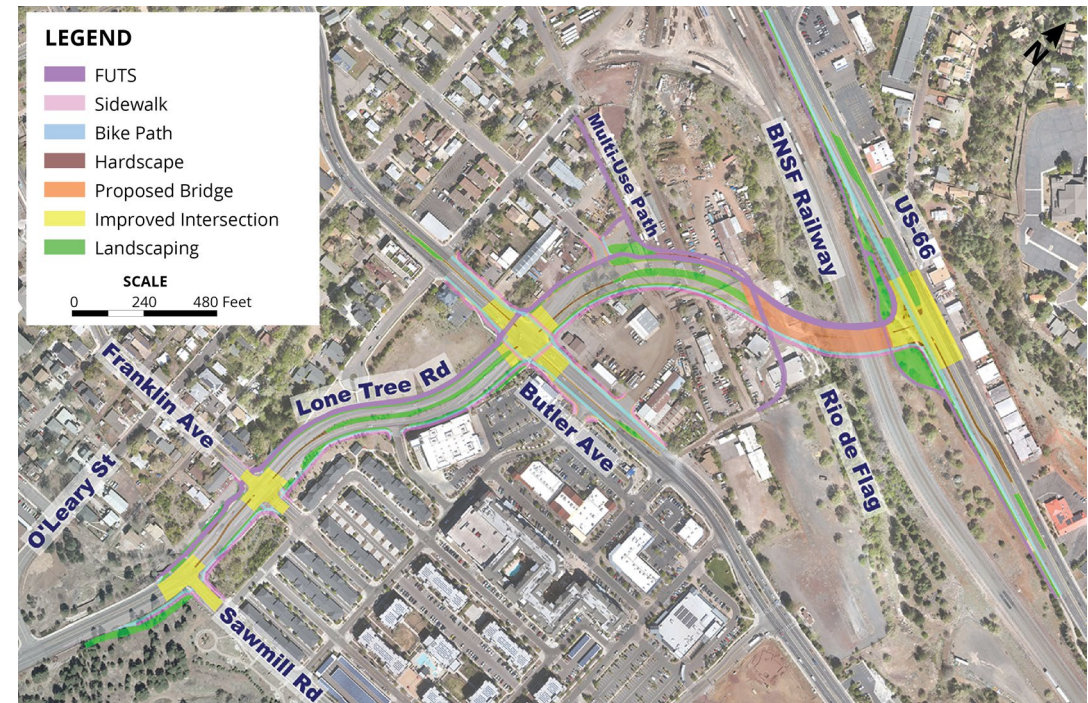
# Project Elements





# Project Elements - Details

- ✧ 0.6 miles FUTS trail extension
  - » Bidirectional bicycle lanes
- ✧ 0.6 miles of bicycle track
- ✧ Bicycle lanes, FUTS, and sidewalks are off-road
- ✧ New grade-separated FUTS connections north end of project
- ✧ Grade-separated bicycle and pedestrian trail south end of project





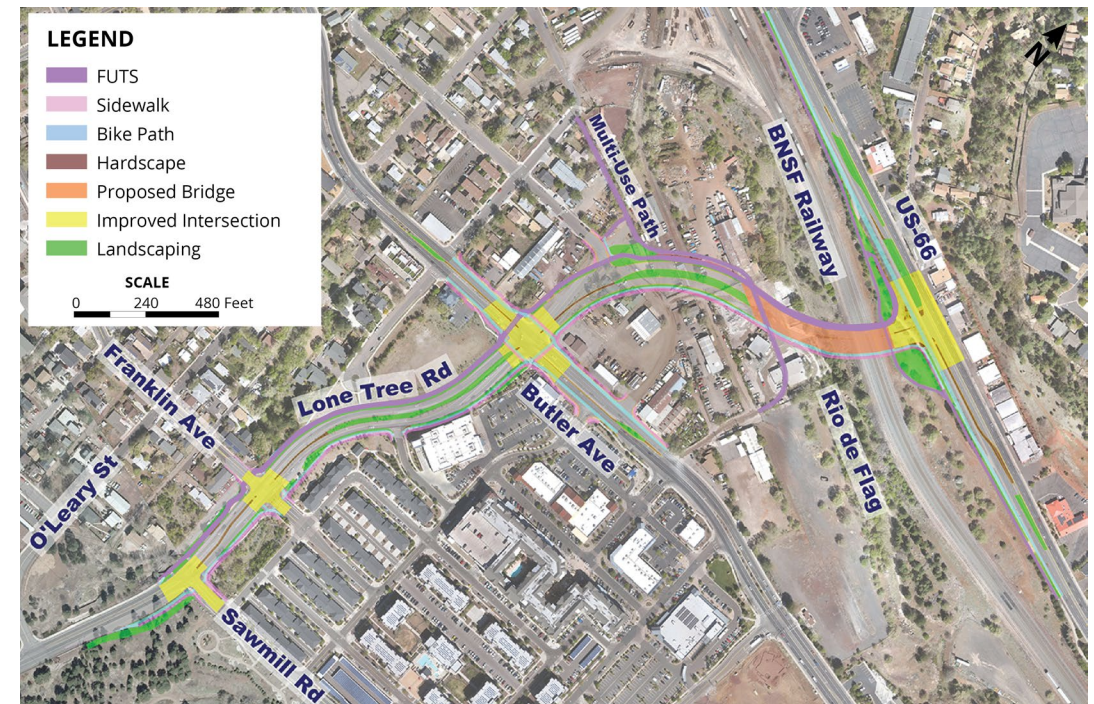
# Project Elements - Details

## ✧ Phase 1

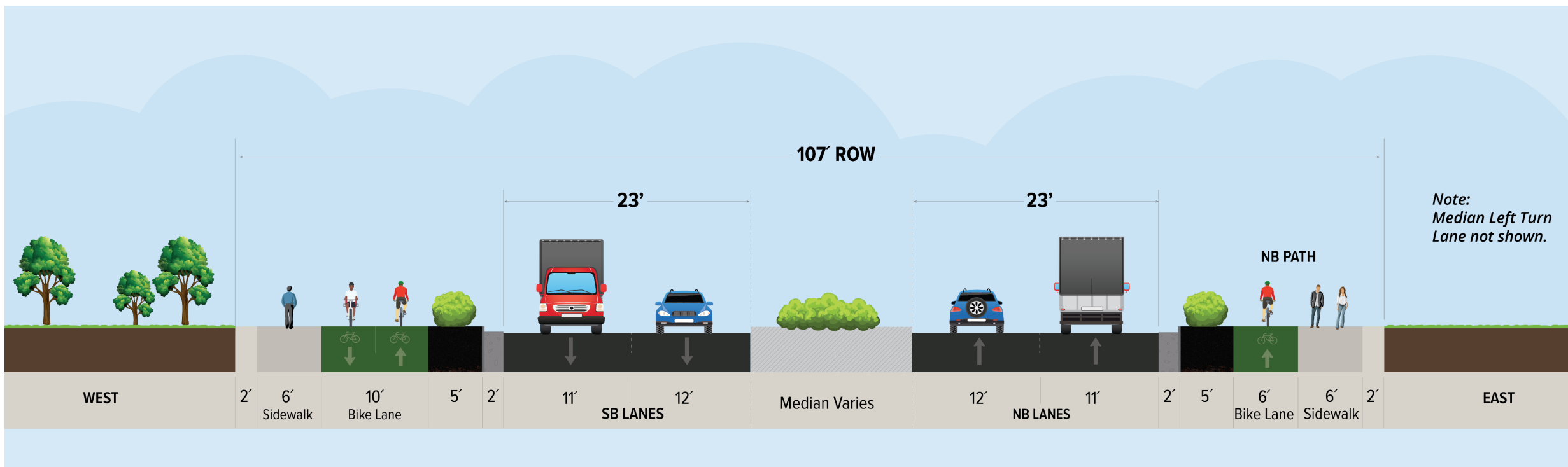
- » 0.3 miles of roadway widening from two-lane to four-lane between Butler Avenue and O'Leary Street
- » Protected intersections at Route 66, Butler Avenue, Franklin Avenue, and Sawmill Road

## ✧ Phase 2

- » 0.3 miles of new four-lane roadway between Butler Avenue and Route 66
  - Grade-separated with BNSF Railway and Rio de Flag Flood Control Project



# Lone Tree Road



*Direction: At Sawmill Road looking towards Butler Avenue*



# Protected Intersections

- 1 Corner Apron**  
*To moderate speed and align turning movement*

---

- 2 Corner Island**  
*Separates bike/peds from motorists*

---

- 3 Pedestrian Waiting Area**  
*Visible waiting area at curb*

---

- 4 Warning Markings at Conflict Points**  
*Yield markings and ped crossing*

---

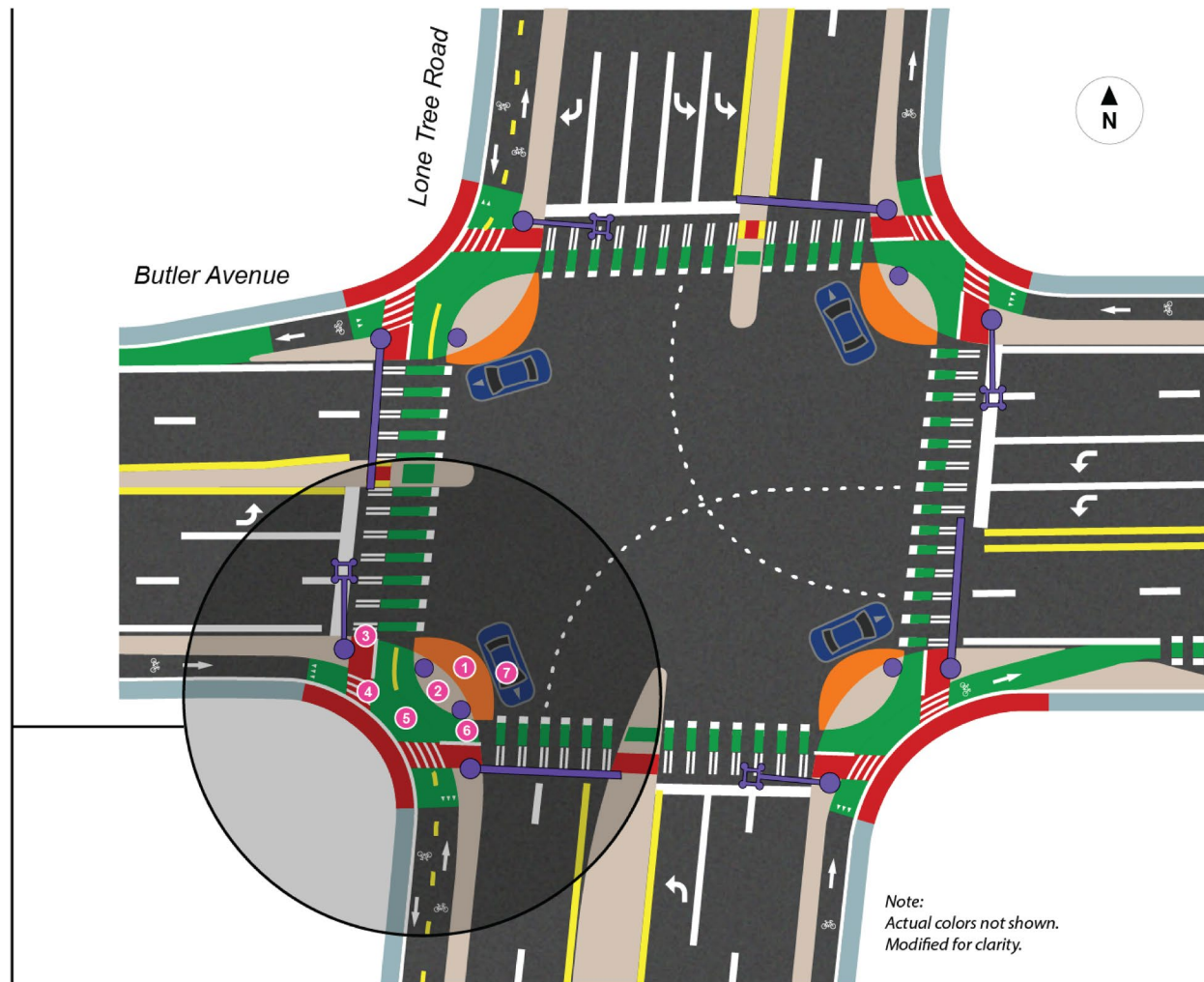
- 5 Bike Waiting Area**  
*Positioned forward of traffic at the stop line*

---

- 6 Crossing Signals**  
*Clarifying times to cross intersection*

---

- 7 Motorist Waiting Zone**  
*Space to wait for peds/bikes out of through traffic*





# CONSTRUCTION

- ✧ Welcome and Overview
- ✧ Project Design
- ✧ Construction Phasing
- ✧ How to Stay Up-to-Date
- ✧ Q & A



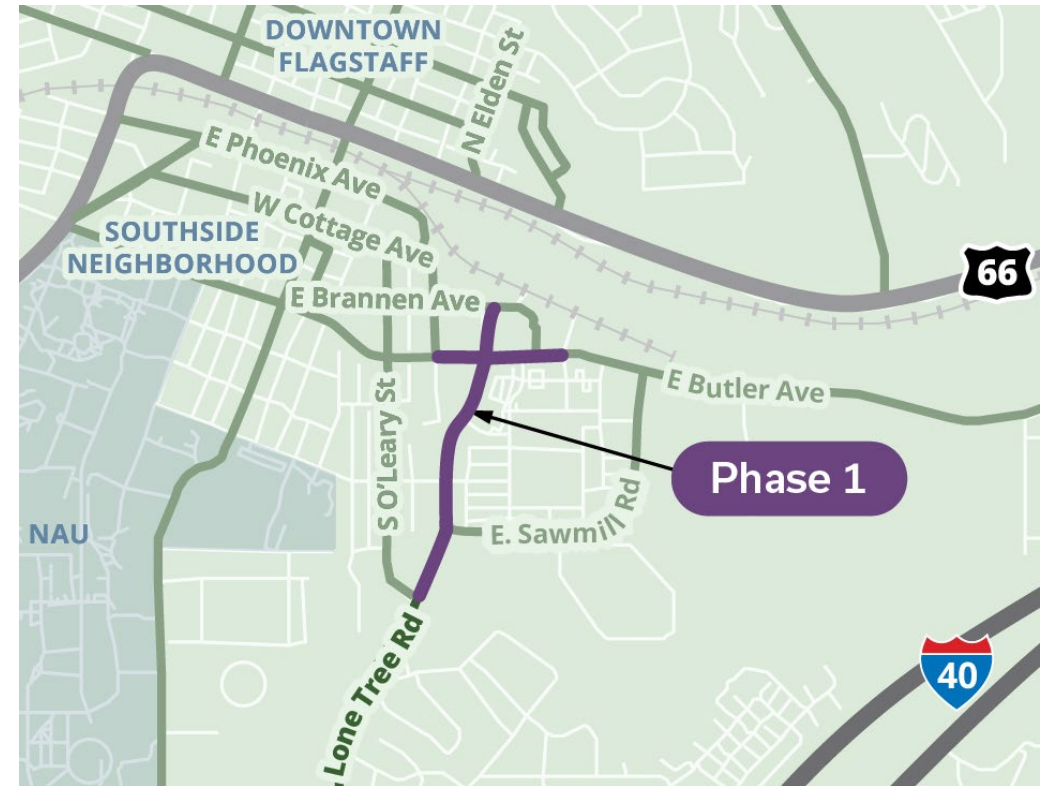
# Construction Phasing

- ✦ Phase One – Lone Tree Corridor Improvements
  - » 2024 - 2026
  - » Roadway and intersection improvements
  - » Lone Tree Road: O’Leary Street to Brannen Avenue
  - » Butler Avenue: Elden Street to Lumber Street
  
- ✦ Phase Two – Lone Tree Overpass
  - » 2025 - 2027
  - » Grade-separated bridge
  - » Lone Tree Road from Brannen Avenue to Route 66



# Lone Tree Corridor Improvements Activities

- ✧ Widening the roadway
  - » Lone Tree Road: O'Leary Street to Brannen Avenue
  - » Butler Avenue: Elden Street to Lumber Street
- ✧ Rebuilding intersections along Lone Tree Road at
  - » Butler Avenue
  - » Sawmill Road
  - » Franklin Avenue
- ✧ Adding protected bicycle and pedestrian facilities
- ✧ Improving utilities and drainage along Lone Tree Road
- ✧ Work will be completed in phases





# Phase 1 Work Zone

- ✦ **Primary work:** Existing median removal.
- ✦ **Butler Avenue:** Reduced to one lane of travel in each direction.
- ✦ **Lone Tree Road:** Remains one lane of travel in each direction.
- ✦ **Anticipated Duration:** June – July 2024





# Phase 2 Work Zone

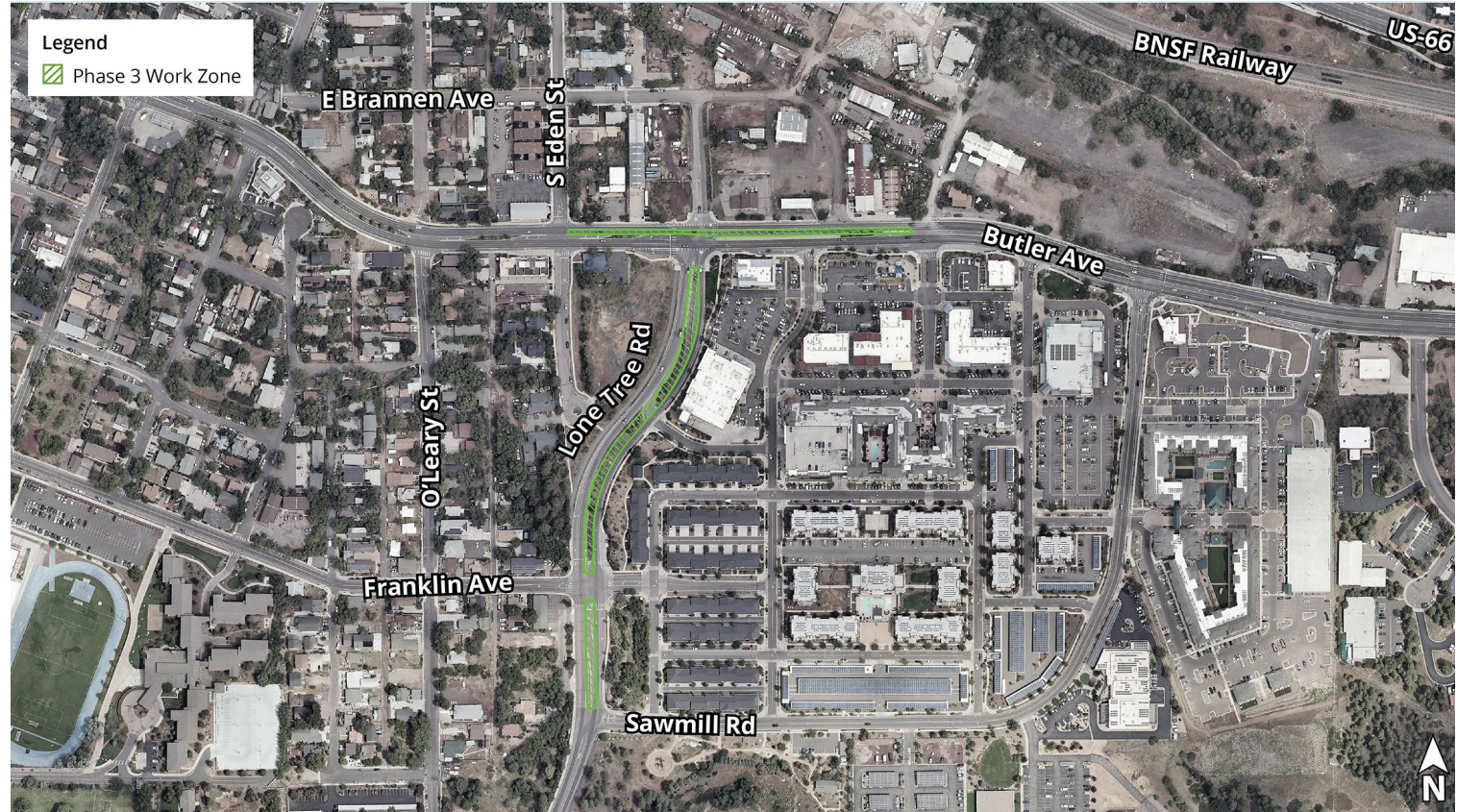
- ✦ **Primary work:** Construct north portion of Butler Avenue and west portion of Lone Tree Road.
- ✦ **Butler Avenue:** Two lanes of travel in each direction shifted south side of Butler Avenue. Left turns restricted.
- ✦ **Lone Tree Road:** One lane of travel in each direction shifted east side of Lone Tree Road.
- ✦ **Anticipated Duration:** August – November 2024  
*(stabilize for winter)*





# Phase 3 Work Zone

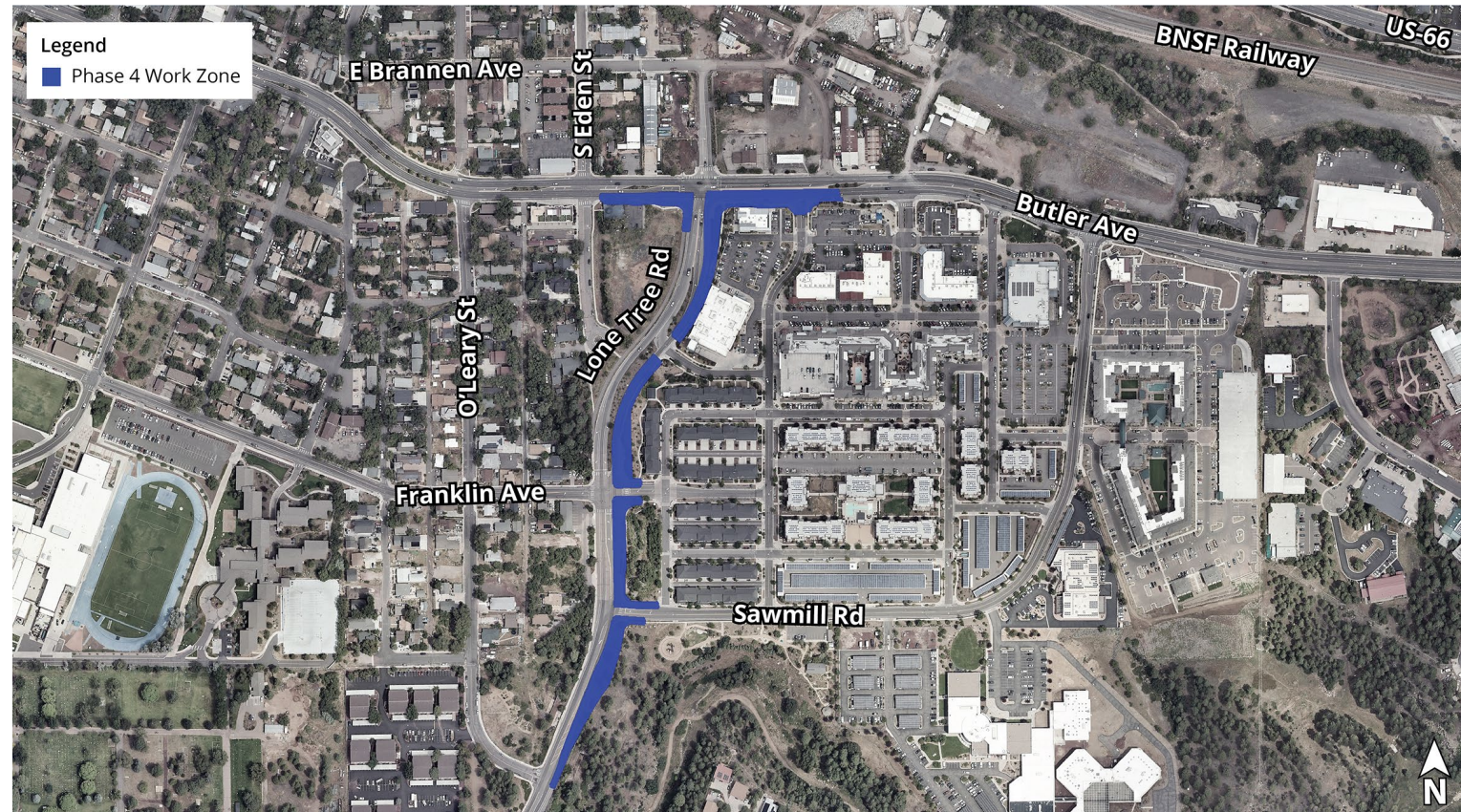
- ✧ **Primary work:** Construct center portion of Butler Avenue and Lone Tree Road.
- ✧ **Butler Avenue:** Two lanes of travel in each direction split on each side of Butler Avenue. Left turns restricted.
- ✧ **Lone Tree Road:** One lane of travel in each direction split on each side of Lone Tree Road. Left turns restricted.
- ✧ **Anticipated Duration:** February – May 2025





# Phase 4 Work Zone

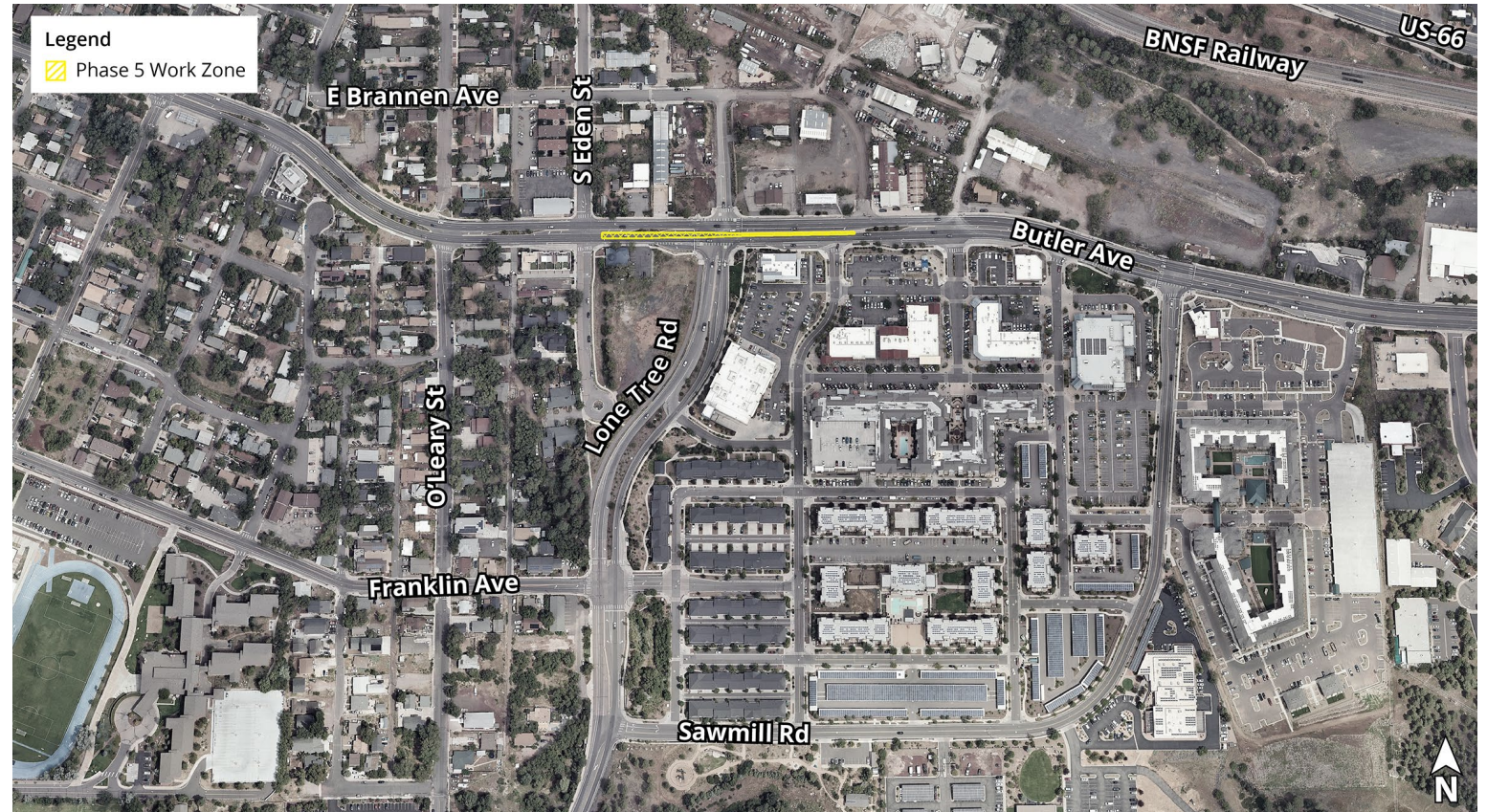
- ✦ **Primary work:** Construct south portion of Butler Avenue and east portion of Lone Tree Road.
- ✦ **Butler Avenue:** Two lanes of travel in each direction shifted north side of Butler Avenue. Left turns restricted.
- ✦ **Lone Tree Road:** One lane of travel in each direction shifted west side of Lone Tree Road.
- ✦ **Anticipated Duration:** June – October 2025





# Phase 5 Work Zone

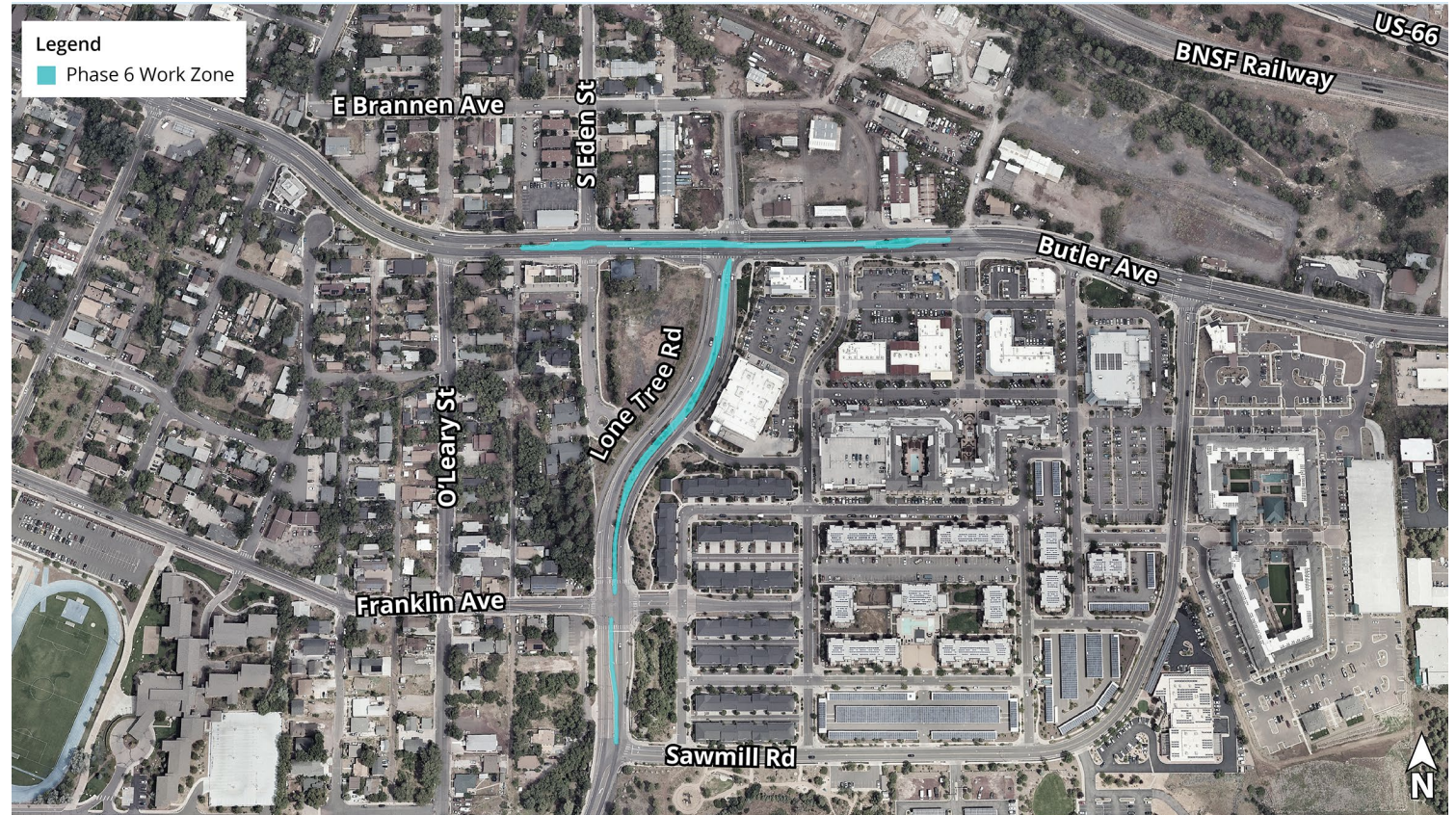
- ✧ **Primary work:** Complete work in median of Butler Avenue.
- ✧ **Butler Avenue:** Left turns restricted.
- ✧ **Anticipated Duration:** November – December 2025 (*weather permitting*)





# Phase 6 Work Zone

- ✧ **Primary work:** Construct median on Butler Avenue and Lone Tree Road.
- ✧ **Butler Avenue:** Left turns restricted.
- ✧ **Anticipated Duration:** February – May 2026  
*(contingent on Phase 5)*





# What to Expect During Construction

- ✧ Anticipated work schedule
  - » Weekdays – daytime (typical hours: 6 a.m.- 4 p.m.)
  - » Weekends – daytime and nighttime (as needed)
- ✧ Traffic restrictions and closures
  - » Access will remain to businesses
- ✧ Noise and dust
- ✧ Traffic restriction information will be on the City of Flagstaff's website



# STAY UPDATED

- ✧ Welcome and Overview
- ✧ Project Design
- ✧ Construction Phasing
- ✧ How to Stay Up-to-Date
- ✧ Q & A



# Stay Up-to-Date on Construction Activities



## Project Website:

- Construction updates, join the project's email distribution list

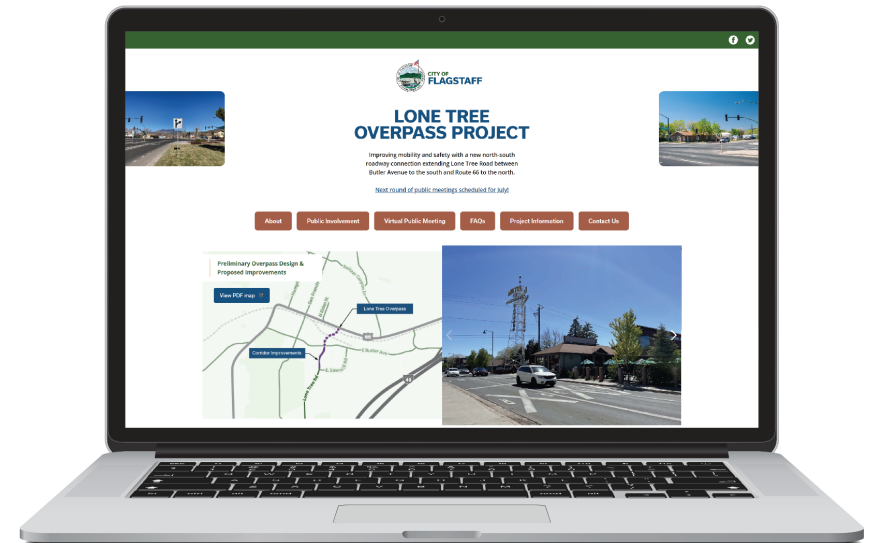


## Questions? Concerns?

- Matthew Schoonmaker, Ames Construction  
Phone: 602-781-5219  
MatthewSchoonmaker@amesco.com
- Christine Cameron, City of Flagstaff  
Phone: 928-213-2682  
CCameron@flagstaffaz.gov



Sign-in at the registration table or complete a comment form to be added to the project's email distribution list





# QUESTIONS

- ✧ Welcome and Overview
- ✧ Project Design
- ✧ Construction Phasing
- ✧ What to Expect During Construction
- ✧ How to Stay Up-to-Date
- ✧ Q & A